

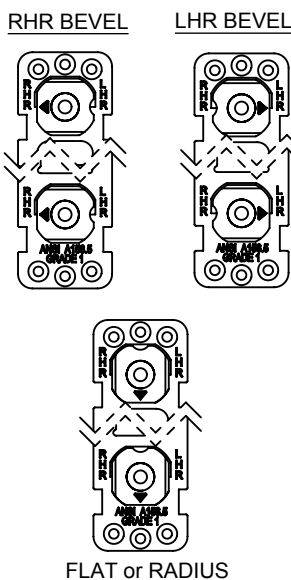
1



- INSERT MOUNTING BACK PLATE BEHIND JAMB AND FASTEN WITH #10 FLAT HEAD SCREWS.
- INSERT TRIM BOX WITH 2101 STRIKE PLATE AND FASTEN WITH #10 FLAT HEAD SCREWS TO BACK PLATE AS SHOWN.

②

-

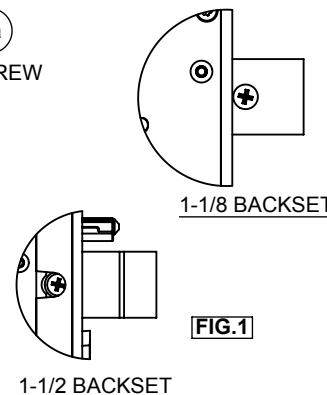


**FOR RADIUS FACEPLATE
WITH WEATHERSEAL ONLY !**

-
- A detailed line drawing of the front plate being removed from the lock assembly. A screwdriver is shown inserted into the top of the plate, with the handle extending to the right. The plate has a keyhole at the top and a circular opening in the center. The lock mechanism is visible through the central opening.

3

- 1-1/2" BACKSET
SHOWN



BEVELED SIDE SHOULD FACE THE SAME DIRECTION AS THE INTER-CONNECT CAM (a)

LATCH BOLT

#6-32 FLAT HEAD SCREW (a)

INTER-CONNECT CAM

BACK VIEW

INTER-CONNECT CAM (0268) (3b)

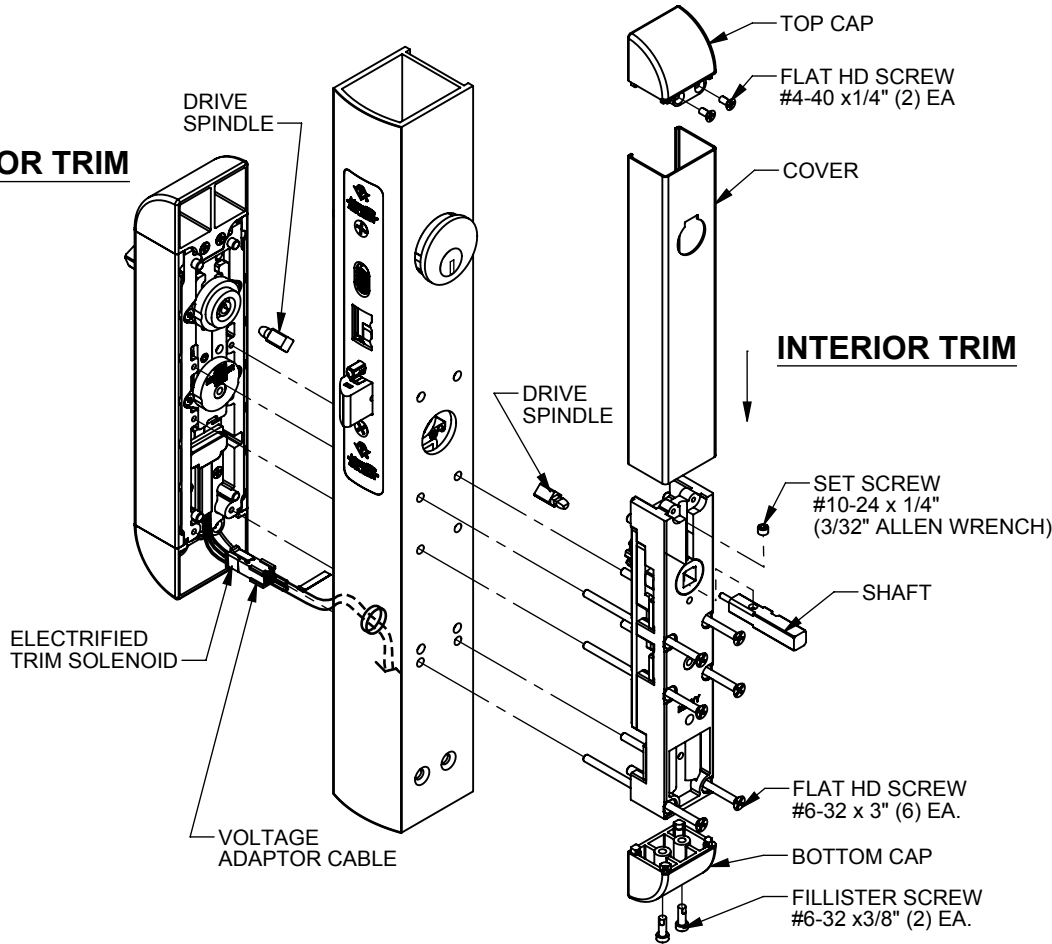
10 INSTALLING INTERIOR & EXTERIOR TRIM TO STILE

- INSERT DRIVE SPINDLE INTO EACH TRIM BODY PRIOR TO MOUNTING.
- MOUNT THE EXTERIOR TRIM AND INTERIOR TRIM BODY TO THE STILE USING (6) #6-32 x 3" FLAT HEAD SCREWS.
- SLIDE THE COVER ONTO INTERIOR TRIM BODY FROM THE TOP.
- INSERT SHAFT THRU THE HOLE ON THE COVER AND THE OUTPUT ON TRIM BODY. THE GROOVE ON THE SHAFT FACES OPPOSITE THE LATCH BOLT. TIGHTEN THE SET SCREW WITH A 3/32" ALLEN WRENCH TO SECURE THE SHAFT AS SHOWN IN FIG. 2.
- INSTALL TOP CAP USING (2) #4-40 x 1/4" FLAT HEAD SCREWS.
- PUSH THE COVER UP FLUSH WITH THE TOP CAP. INSTALL BOTTOM CAP USING (2) #6-32 x 3/8" FILLISTER HEAD SCREWS.

FIG. 2

EXTERIOR TRIM

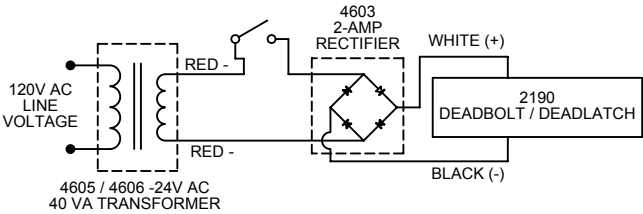
INTERIOR TRIM



ELECTRIFIED TRIM SOLENOID SPECIFICATION

SOLENOID AVAILABLE VOLTAGES
12V DC CONTINUOUS DUTY,
24V DC CONTINUOUS DUTY.

2190 WIRING DIAGRAM
INTERMITTENT / CONTINUOUS DUTY 12 / 24V DC

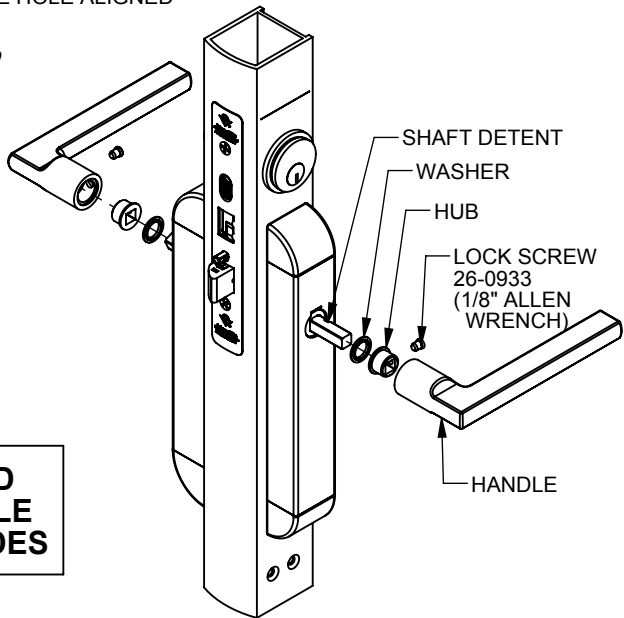


- EXTEND THE WIRE RUN FROM THE POWER SOURCE AND THROUGH THE ACCESS HOLE ON THE EXTERIOR SIDE OF THE STILE.
- ATTACH VOLTAGE ADAPTOR CABLE TO 2190 AS SHOWN.

VOLTAGE ADAPTOR CABLE			
P/N#	WIRE COLOR	APPLICATION	SOLENOID CURRENT DRAW
VA7400-12	BLACK	12V DC	0.44 AMPS
VA7400-24	RED	24V DC	0.23 AMPS

11 INSTALLING HANDLE (INTERIOR / EXTERIOR)

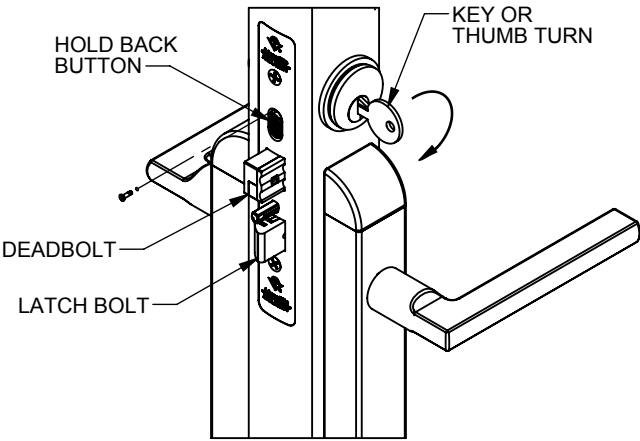
- INSERT WASHER THEN INSERT HUB OVER SHAFT. ON HANDLES 2190-01, 2190-02, 2190-03, THE HUB IS FACTORY INSTALLED. REMOVE LOCK SCREW WITH 1/8" ALLEN WRENCH AND PROCEED TO NEXT STEP.
- INSTALL HANDLE OVER THE HUB WITH THE HOLE ALIGNED WITH THE HOLE ON THE HUB.
- NOTE: THE SHAFT DETENT SHOULD BE ALIGNED WITH THE LOCKING SCREW.*
- MOVE THE HANDLE IN UNTIL IT IS AGAINST THE TRIM COVER.
- FASTEN THE LOCK SCREW 26-0933 TO SECURE THE HANDLE WITH 1/8" ALLEN WRENCH.



PRODUCT MUST BE INSTALLED
ACCORDING TO ALL APPLICABLE
BUILDING AND LIFE SAFETY CODES

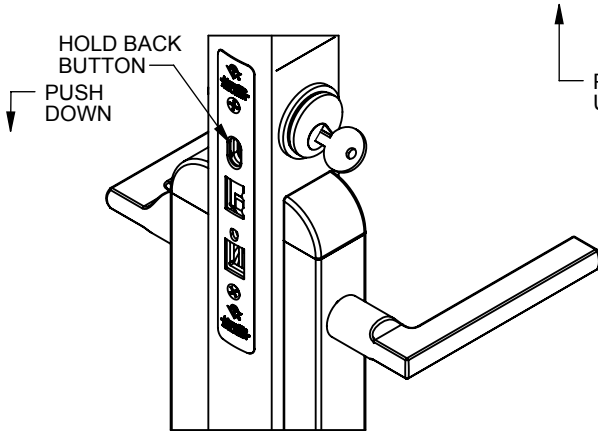
LATCH HOLD BACK FEATURE

- IN THE LOCK POSITION, INSERT KEY, TURN KEY 180° TO RETRACT THE DEADBOLT.
- TURN KEY 315° TO RETRACT THE LATCHBOLT.
- HOLD IN THIS POSITION AND PUSH DOWN THE HOLD BACK BUTTON TO RETAIN LATCHBOLT.
- RETURN KEY TO NEUTRAL POSITION AND REMOVE KEY.



TO RELEASE HOLD BACK

- INSERT KEY, TURN KEY OR THUMB TURN ABOUT 135° AND HOLD.
- PUSH UP THE HOLD BACK BUTTON TO RELEASE THE LATCH BOLT.
- RETURN KEY TO THE NEUTRAL POSITION AND REMOVE KEY.



TEST OPERATION

- EXTEND DEADBOLT WITH KEY OR THUMBTURN.
- PUSH DOWN ON INTERIOR LEVER. THE DEADBOLT AND LATCH SHOULD FULLY RETRACT.
- IF LATCH ONLY RETRACTS - REFER TO STEP 4 FOR INTER-CONNECTION CONFIGURATION.
- IF NEITHER RETRACT - REFER TO STEP 11 FOR DRIVE SPINDLE INSTALLATION.
- PUSH DOWN ON EXTERIOR LEVER - THE LATCH ONLY SHOULD RETRACT.

