

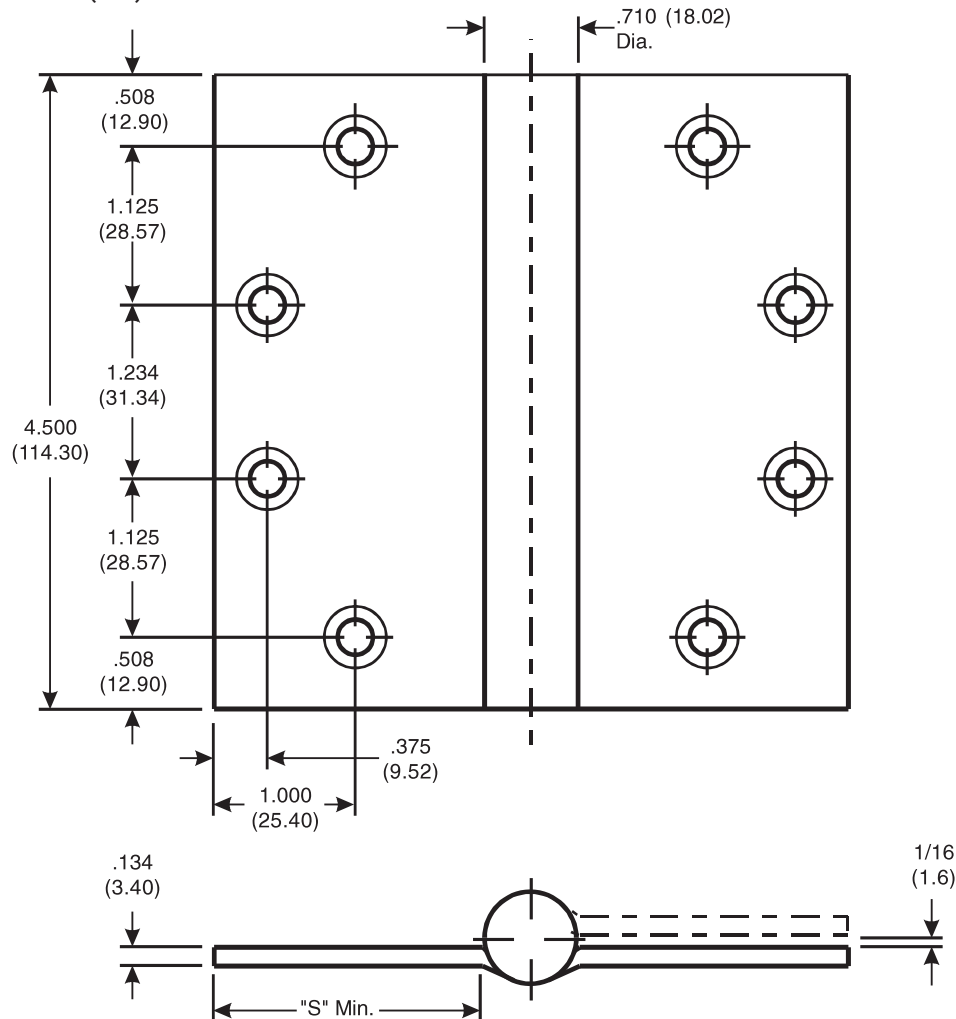
Architectural Door Accessories

ASSA ABLOY

McKinney 4 1/2 x 4 1/2 MPS60 Template Full Mortise Concealed Bearing Adjustable Spring Hinge

The global leader in
door opening solutions

DO NOT SCALE
DIMENSIONS: INCHES (MM)



CATALOG NUMBER	"S" DISTANCE (SWAGE LINE)
	HINGE WIDTH
STEEL HINGES	4 1/2 (114.3)
MPS60	1-27/32 (46.8)

Template 540M-09

Effective date:
July 6, 2009

Supersedes: All Previous

McKINNEY Template Full Mortise Concealed Bearing Adjustable Spring Hinges are made to conform to ANSI/BHMA 156.7.

Machine Screw Size:
1/2 x 12-24 F.H.

Wood Screw Size:
1 1/4 x 12 F.H.



**TRADEMARK
HARDWARE**
WORLD OF QUALITY HARDWARE
WWW.TMHARDWARE.COM

225 Episcopal Road
Berlin CT 060377
P: 800.346.7707 | F: 800.541.1073
www.mckinneyhinge.com | dss-orders@assaabloy.com

McKinney is a brand associated with Corbin Russwin, Inc., an ASSA ABLOY Group company. Copyright © 2017, Corbin Russwin, Inc. All rights reserved. Reproduction in whole or in part without the express written permission of Corbin Russwin, Inc. is prohibited.

540M-09 - 2/17