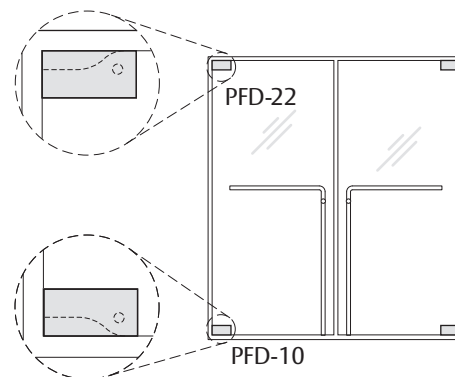
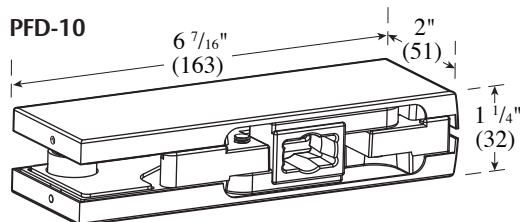


PFD-22 Top OHC Patch Fitting & PFD-10 Bottom Patch Fitting Installation Instructions

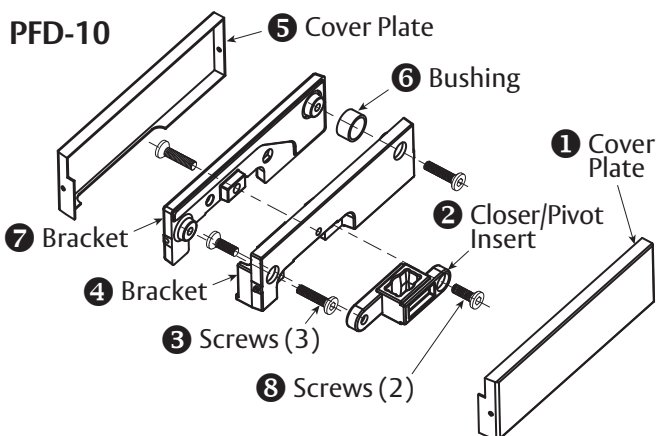
For Installation Assistance, Call 855.594.6989 • www.assaabloyglass.us

Tools Needed:
Torque Wrench and Bit
5mm Allen Wrench



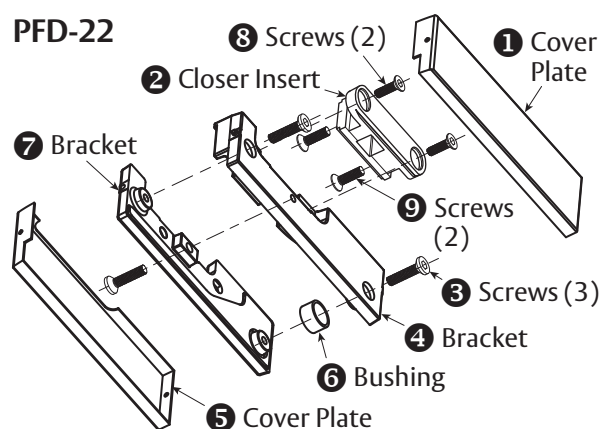
NOT TO SCALE

Parts Included



PFD-10 Parts List

1	Cover Plate
2	Closer/Pivot Insert — PF-INS10
3	1 1/16" - M6 x 27 Screws (3)
4	Bracket
5	Cover Plate
6	Bushing
7	Bracket
8	3/4" - M6 x 20 Screws (2)



PFD-22 Parts List

1	Cover Plate
2	Closer Insert — PF-INS22
3	1 1/16" - M6 x 27 Screws (3)
4	Bracket
5	Cover Plate
6	Bushing
7	Bracket
8	3/4" - M6 x 20 Screws (2)
9	15/16" - M8 x 24 Screws (2)

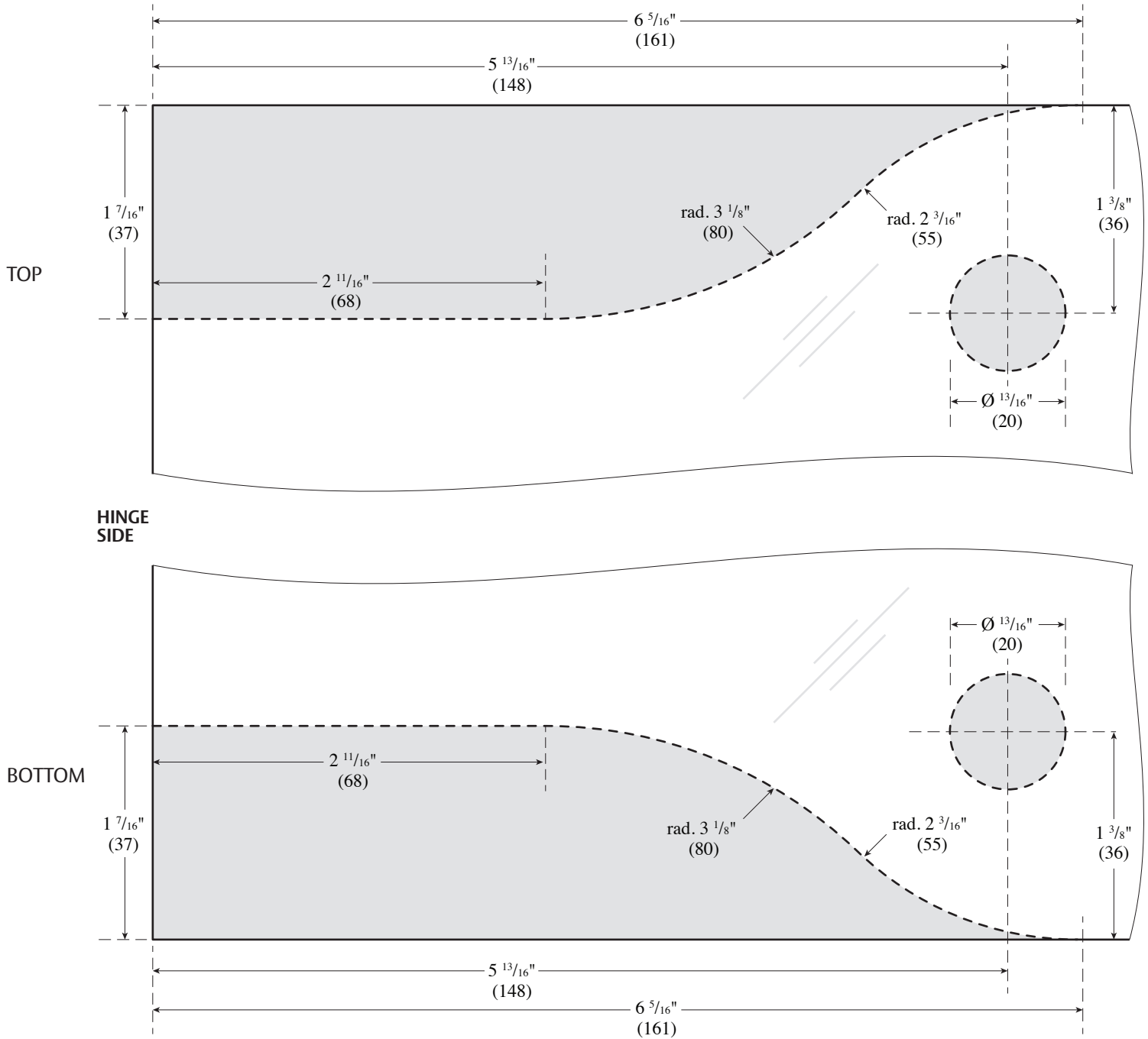
1. Prepare the Door

USE FABRICATION SKETCH TO DRILL AND CUT GLASS.

- Cut away glass (shaded area) along dotted line to match sketch dimensions.
- Drill $\frac{13}{16}$ " (20 mm) diameter hole.

NOT TO SCALE

DIMENSIONS IN INCHES (MILLIMETERS)



Caution: Office copiers, printers and facsimile machines may change the size of a drawing and make it inaccurate to use as a template.

ASSA ABLOY

The global leader in
door opening solutions

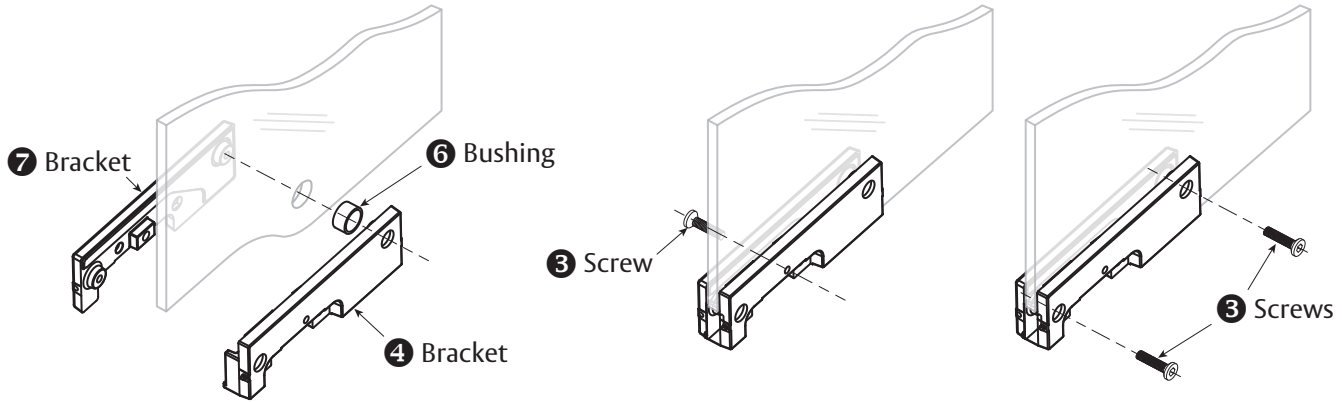
Copyright © 2017, ASSA ABLOY Inc. All rights reserved. Reproduction in whole or in part
without the express written permission of ASSA ABLOY Inc. is prohibited.

PFD-22, PFD-10 - 06/17

2. Fasten Support Brackets (PFD-10 - Bottom)

Make sure the surface is thoroughly cleaned.

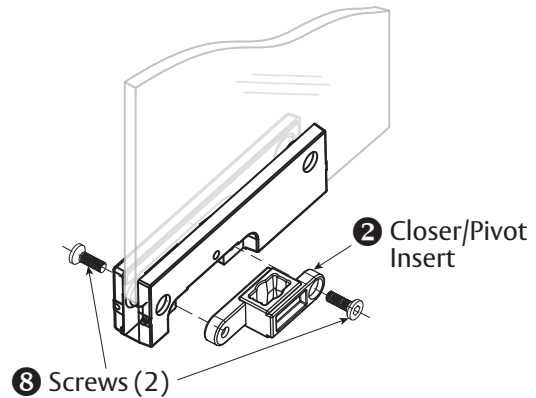
- Insert Bushing **6** in prepped $\frac{13}{16}$ " (20 mm) diameter hole.
- Place Bracket **4** into prepped area of glass door, join Bracket **7** from the other side. Insert Screw **3** into main center hole and tighten with fingers to hold Brackets together. Do not tighten completely to allow for adjustments throughout installation.
- Insert 2 remaining Screws **3** into Bracket **4**, align fitting to desired position. Torque both Screws to 12 nm. Then tighten center Screw to 12 nm.



3. Install Bottom Closer/Pivot Insert

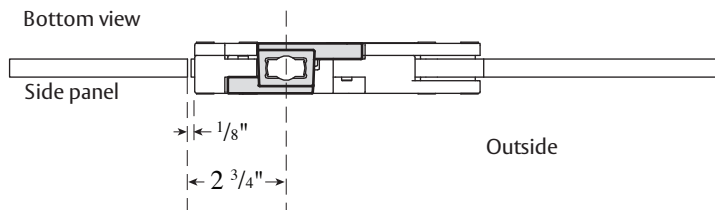
Ensuring that the long leg is facing the hinge side of the door and the wide tapered side is at the bottom of the patch.

- Insert Screws **8** on either side of Closer/Pivot Insert **2** to secure to patch fitting.
- Do not tighten completely to allow for adjustments throughout installation.



4. Align Bottom Closer/Pivot Insert

- Alignment of Closer/Pivot Insert **2** is determined by pivot pin (part not included).
- After alignment tighten Screws **9** completely by alternating



ASSA ABLOY

The global leader in
door opening solutions

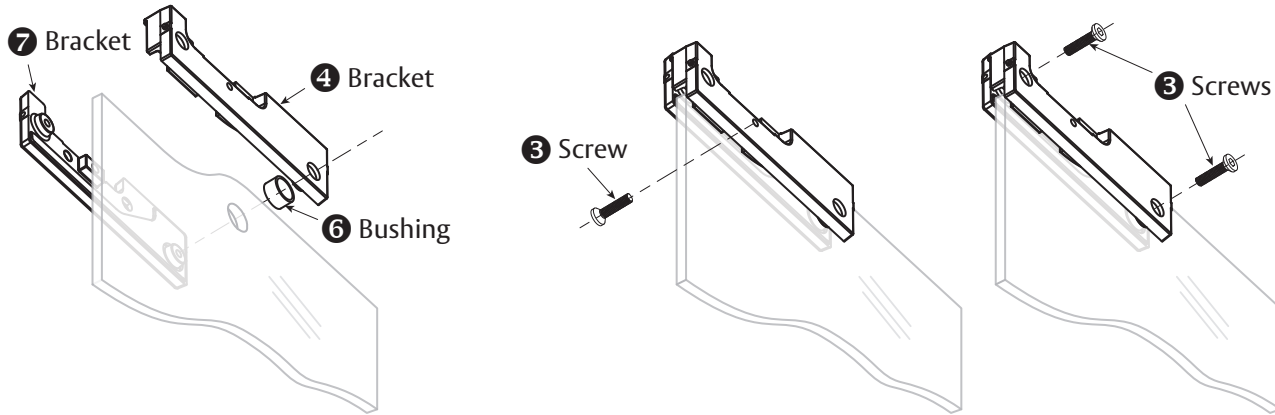
Copyright © 2017, ASSA ABLOY Inc. All rights reserved. Reproduction in whole or in part without the express written permission of ASSA ABLOY Inc. is prohibited.

PFD-22, PFD-10 - 06/17

5. Fasten Support Brackets (PFD-22 - Top)

Make sure the surface is thoroughly cleaned.

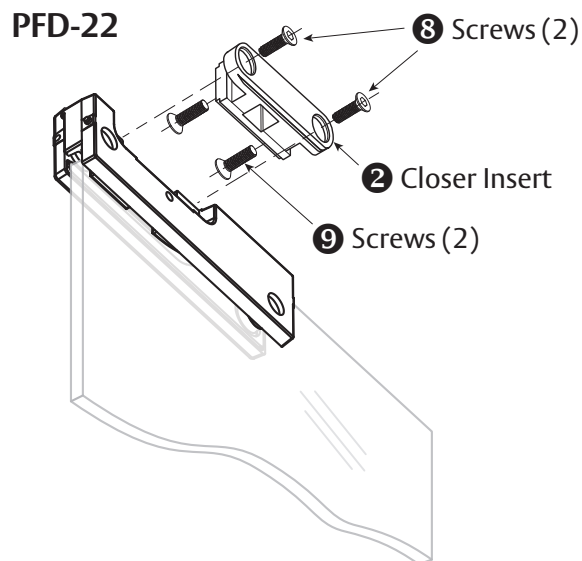
- Insert Bushing **6** in prepped $\frac{13}{16}$ " (20 mm) diameter hole.
- Place Bracket **4** into prepped area of glass door, join Bracket **7** from the other side. Insert Screw **3** into main center hole and tighten with fingers to hold Brackets together. Do not tighten completely to allow for adjustments throughout installation.
- Insert remaining 2 Screws **3** into Bracket **4**, align fitting to desired position. Torque both Screws to 15 nm. Then tighten center Screw to 15 nm.



6. Install Top Closer Insert

Ensuring that the long leg is facing the hinge side of the door.

- Insert Screws **8** on either side of Closer Insert **2** to secure to patch fitting.
- Align Closer Insert **2** as in Step 4.
- Loosen Screws **9** to insert COC spindle.
- Tighten Screws **9** after inserting COC spindle.



ASSA ABLOY

The global leader in
door opening solutions

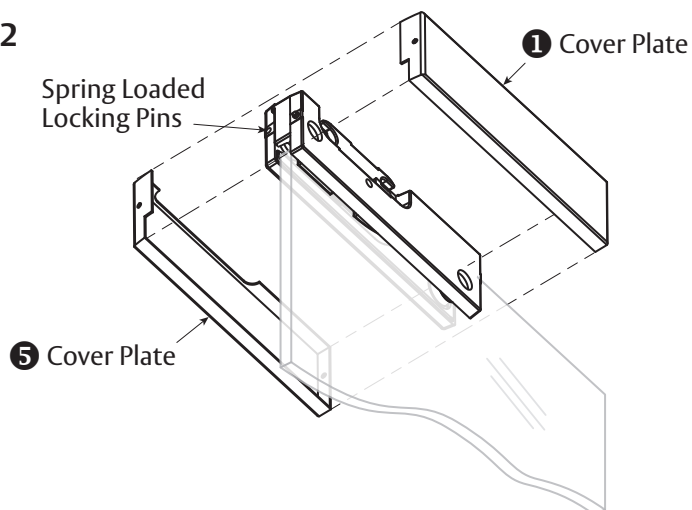
Copyright © 2017, ASSA ABLOY Inc. All rights reserved. Reproduction in whole or in part without the express written permission of ASSA ABLOY Inc. is prohibited.

PFD-22, PFD-10 - 06/17

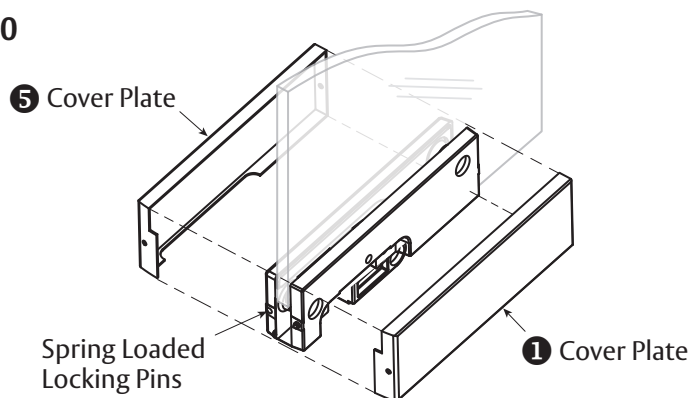
7. Install Cover Plates

- Remove adhesive strip paper on both Brackets (4, 7) to adhere Cover Plates (5, 1).
- Hook Cover Plates 5 & 1 over hinge side locking pin.
- Push in spring loaded locking pin on opposite side of Bracket.
- Snap on Cover Plates.

PFD-22



PFD-10



ASSA ABLOY

The global leader in
door opening solutions

Copyright © 2017, ASSA ABLOY Inc. All rights reserved. Reproduction in whole or in part without the express written permission of ASSA ABLOY Inc. is prohibited.

PFD-22, PFD-10 - 06/17

ASSA ABLOY is the global
leader in door opening solutions,
dedicated to satisfying
end-user needs for security,
safety and convenience

ASSA ABLOY

www.assaabloyglass.us

USA:
ASSA ABLOY Glass Solutions
Rockwood, PA 15557
Phone: 855.594.6989