

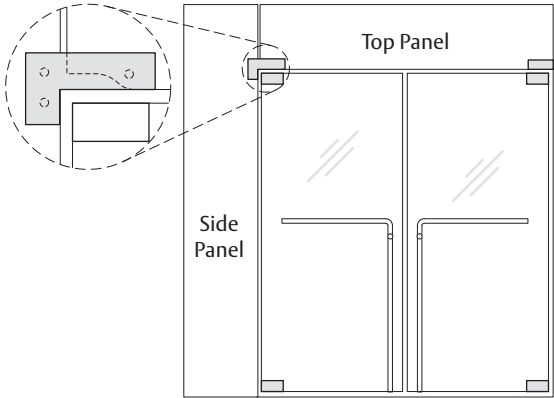
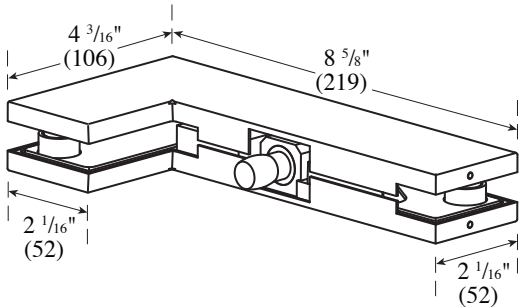
PFT-40 Sidelite Transom Patch Installation Instructions

ASSA ABLOY

The global leader in
door opening solutions

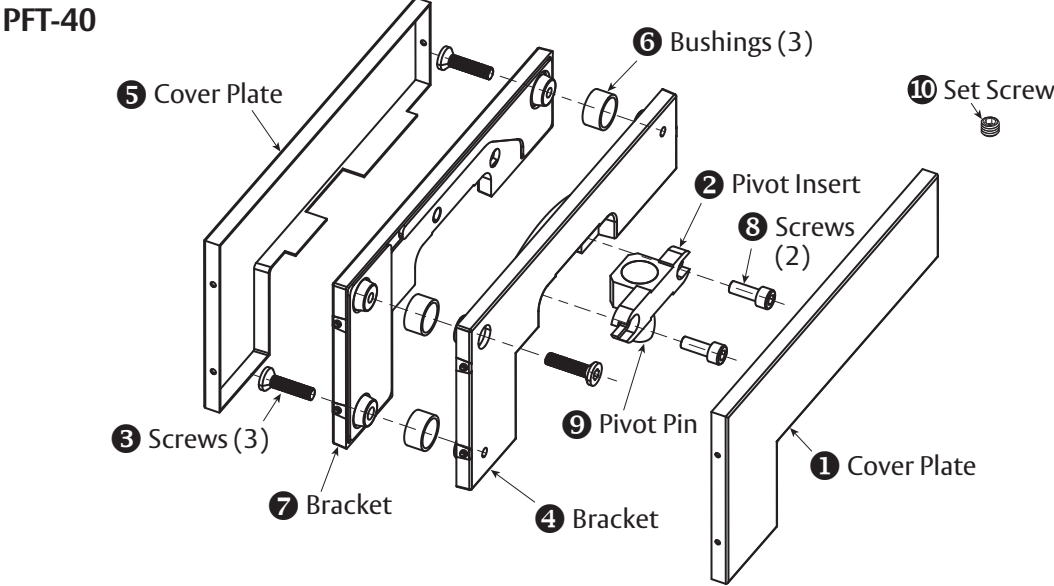
For Installation Assistance, Call 855.594.6989 • www.assaabloyglass.us

Tools Needed:
Torque Wrench and Bit
3 mm Hex Wrench
5 mm Hex Wrench



NOT TO SCALE

Parts Included



PFT-40 Parts List

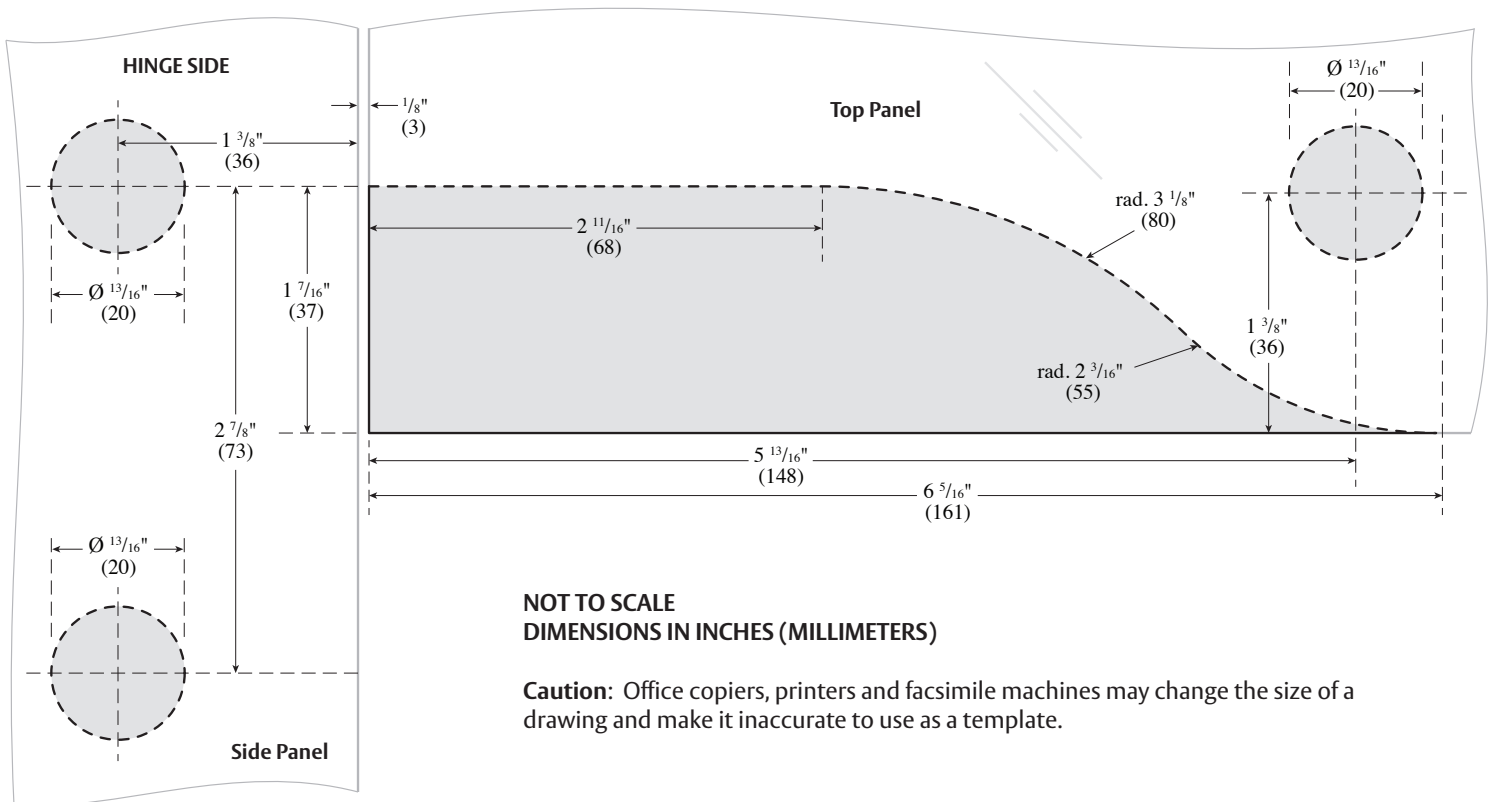
1	Cover Plate
2	Pivot Insert — PF-INS3040
3	1 1/16" - M6 x 27 Screws (3)
4	Bracket
5	Cover Plate

6	Bushings (3)
7	Bracket
8	3/4" - M6 x 16 Screws (2)
9	Pivot Pin
10	Set Screw

1. Prepare the Glass

USE FABRICATION SKETCH TO DRILL AND CUT GLASS.

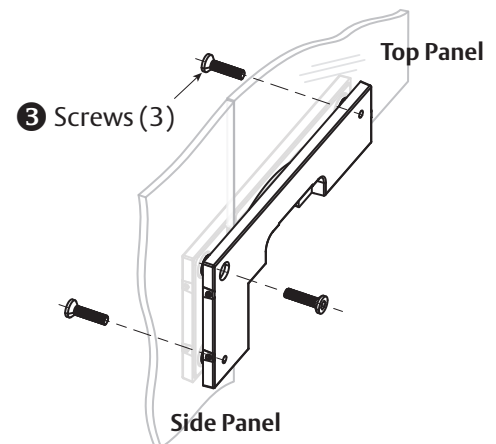
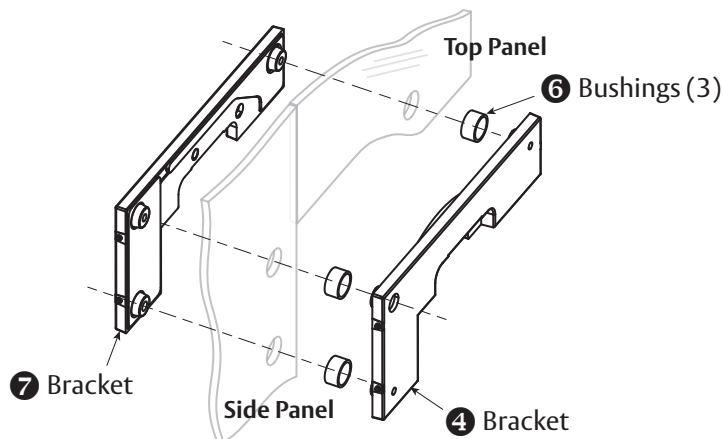
- Cut away glass (shaded area) along dotted line to match sketch dimensions.
- Drill three $\frac{13}{16}$ " (20 mm) diameter holes.



2. Fasten Support Brackets

Make sure the surface is thoroughly cleaned and remove all screws.

- Insert the three Bushings **6** into prepped $\frac{13}{16}$ " (20 mm) diameter holes.
- Place Bracket **4** into prepped area of glass, join Bracket **7** from the other side. Insert Screw **3** into Bracket **4** using 5 mm wrench to tighten Brackets together. Do not tighten completely to allow for adjustments throughout installation.
- Insert two remaining Screws **3** into Bracket **7**, align fitting to desired position. Torque both Screws in alternating fashion to 12 nm. Then tighten Bracket **4** Screw to 12 nm.



ASSA ABLOY

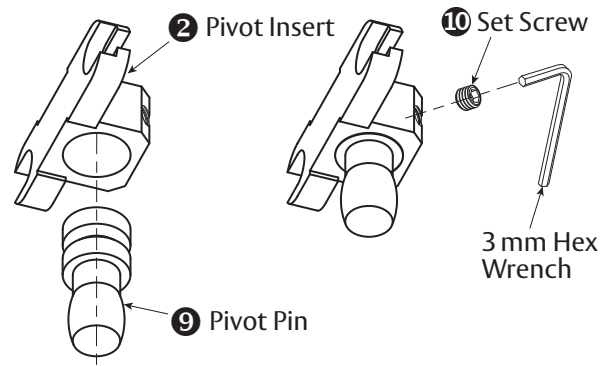
The global leader in
door opening solutions

Copyright © 2017, ASSA ABLOY Inc. All rights reserved. Reproduction in whole or in part without the express written permission of ASSA ABLOY Inc. is prohibited.

PFT-40 - 06/17

3. Install Pivot Pin

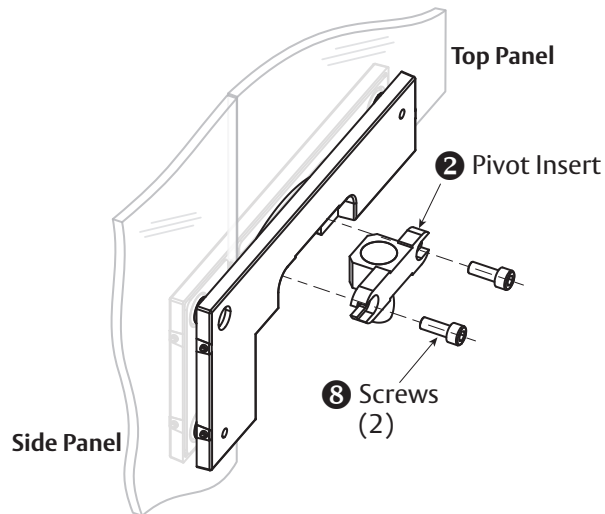
- Place Pivot Pin **9** into Pivot Insert **2**.
- Place Set Screw **10** into set screw hole.
- Tighten Set Screw **10** to hold Pivot Pin in place using 3 mm hex wrench.



4. Install Pivot Insert

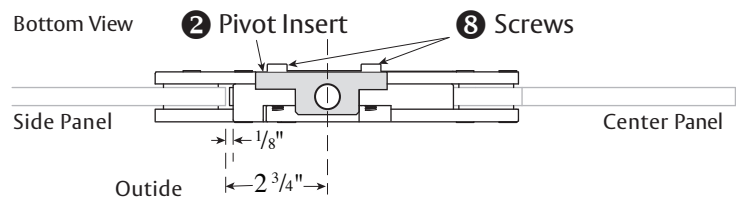
Ensuring that the long leg is toward the hinge side of the glass and the set screw pin hole is facing the inside of the room.

- Insert Screws **8** on either side of Pivot Insert **2** to secure to patch fitting using 5 mm hex wrench.
- Do not tighten completely to allow for adjustments throughout installation.



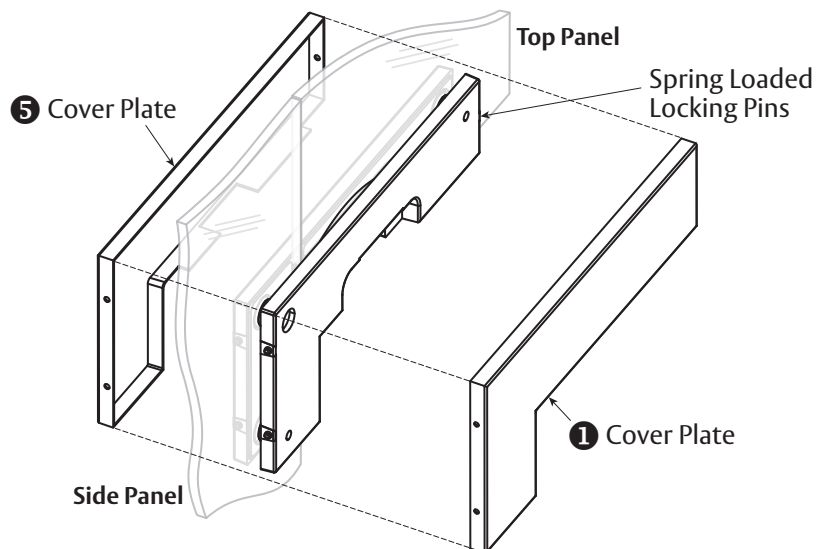
5. Align Pivot Insert

- Alignment of Pivot Insert **2** is determined by Pivot Pin.
- After alignment, torque Screws **8** to 12 nm in alternating fashion using 5 mm hex wrench.



6. Install Cover Plates

- Remove adhesive strip paper on both Brackets (**4** & **7**) to adhere Cover Plates **1** & **5**.
- Hook Cover Plates **1** & **5** over hinge side locking pins.
- Push in spring loaded locking pin on opposite side of Bracket.
- Snap on Cover Plates.



ASSA ABLOY

The global leader in
door opening solutions

Copyright © 2017, ASSA ABLOY Inc. All rights reserved. Reproduction in whole or in part without the express written permission of ASSA ABLOY Inc. is prohibited.

PFT-40 - 06/17

3

ASSA ABLOY is the global
leader in door opening solutions,
dedicated to satisfying
end-user needs for security,
safety and convenience

ASSA ABLOY

www.assaabloyglass.us

USA:
ASSA ABLOY Glass Solutions
Rockwood, PA 15557
Phone: 855.594.6989