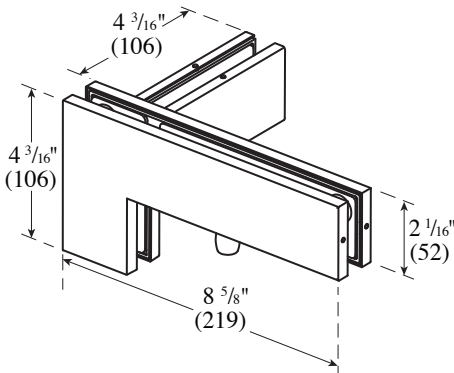


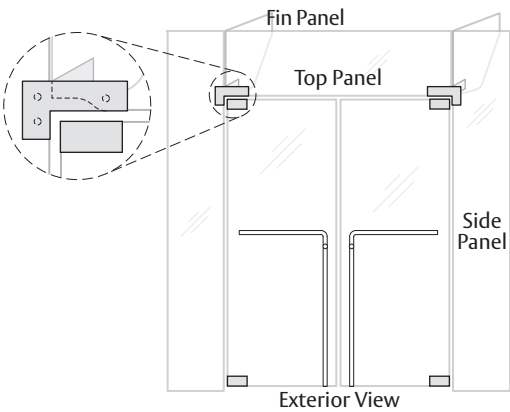
# PFT-41 RH & LH Sidelite Transom Patch Fitting w/Fin Installation Instructions

For Installation Assistance, Call 855.594.6989 • [www.assaabloyglass.us](http://www.assaabloyglass.us)

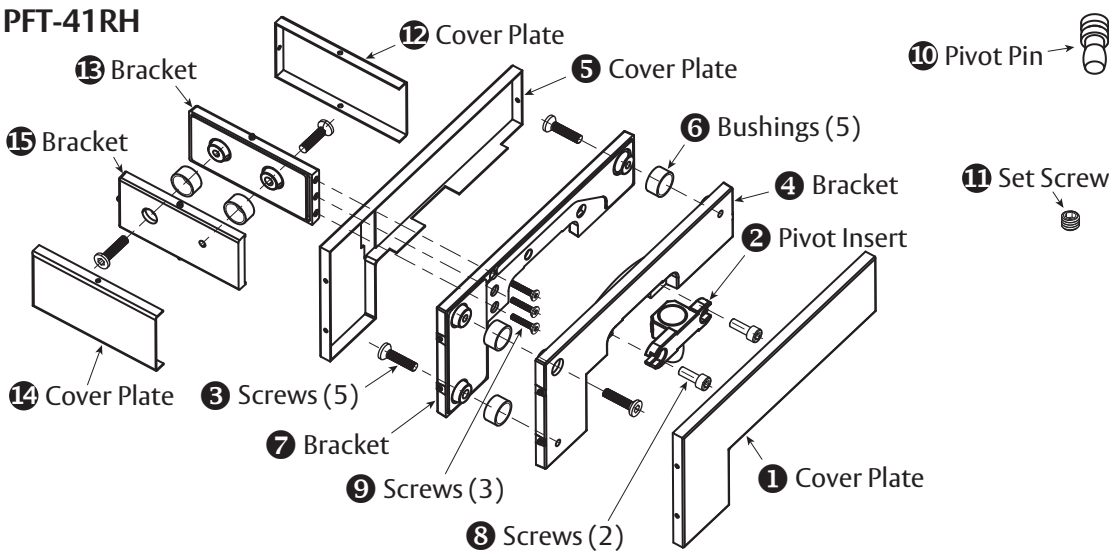
Tools Needed:  
Torque Wrench and Bit  
Screwdriver (Phillips)  
3 mm Hex Wrench  
5 mm Hex Wrench



NOT TO SCALE



## Parts Included



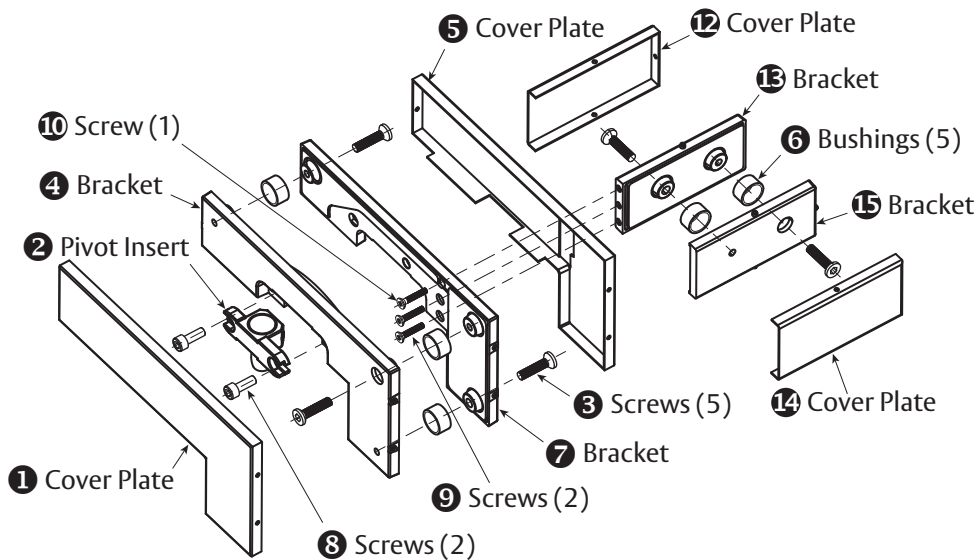
PFT-41RH Parts List

1	Cover Plate
2	Pivot Insert — PF-INS3040
3	1 1/16" - M6 x 27 Screws (5)
4	Bracket
5	Cover Plate
6	Plastic Bushings (5)
7	Bracket
8	3/4" - M6 x 16 Screws (2)

9	3/4" - M4 x 20 Phillips Head Screws (3)
10	Pivot Pin
11	Set Screw
12	Cover Plate
13	Bracket
14	Cover Plate
15	Bracket

## Parts Included

## PFT-41 LH



## PFT-41LH Parts List

1	Cover Plate
2	Pivot Insert — PF-INS3040
3	1 1/16" - M6 x 27 Screws (5)
4	Bracket
5	Cover Plate
6	Plastic Bushings (5)
7	Bracket
8	3/4" - M6 x 16 Screws (2)

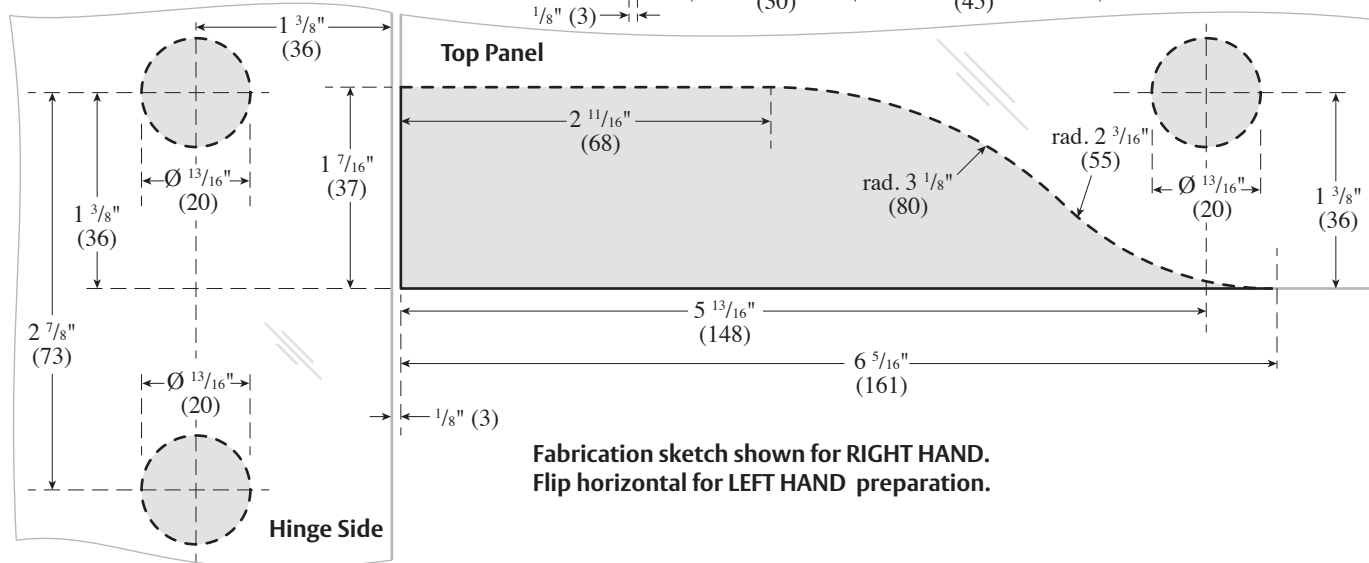
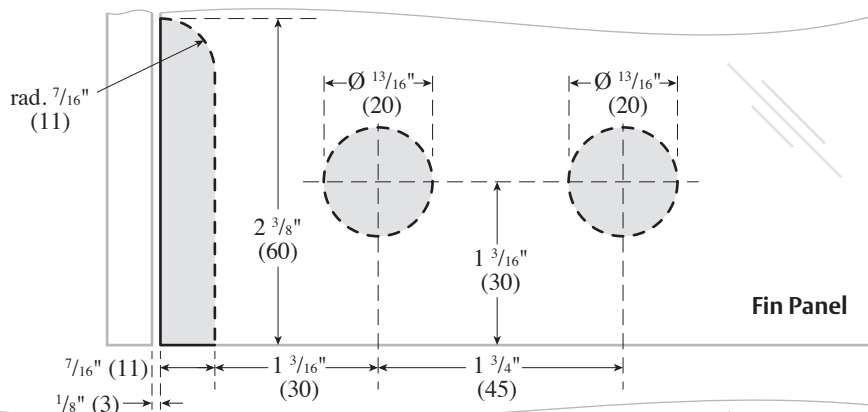
9	$\frac{3}{4}$ " - M4 x 20 Phillips Head Screws (2)
10	1" - M4 x 25 Phillips Head Screw (1)
11	Pivot Pin
12	Set Screw
13	Cover Plate
14	Bracket
14	Cover Plate
15	Bracket

## 1. Prepare the Glass

**NOT TO SCALE**  
**DIMENSIONS IN INCHES (MILLIMETERS)**

**USE FABRICATION SKETCH TO DRILL AND CUT GLASS.**

- Cut away glass (shaded area) along dotted line to match sketch dimensions.
- Drill five  $\frac{13}{16}$ " (20 mm) diameter holes.



**Fabrication sketch shown for RIGHT HAND.  
Flip horizontal for LEFT HAND preparation.**

# ASSA ABLOY

The global leader in  
door opening solutions

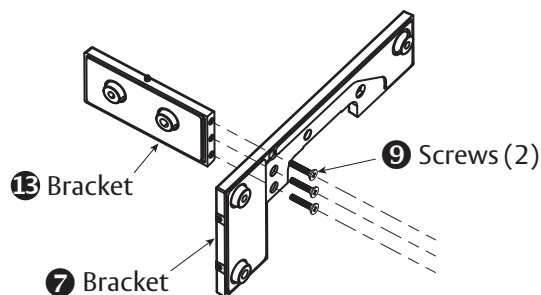
Copyright © 2017, ASSA ABLOY Inc. All rights reserved. Reproduction in whole or in part without the express written permission of ASSA ABLOY Inc. is prohibited.

PFT-41 - 06/17

## 2. Attach Fin to Support Bracket (following diagrams show RIGHT HAND bracket)

Make sure the surface is thoroughly cleaned and remove all screws.

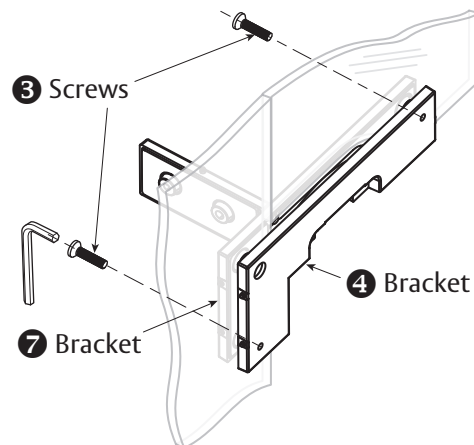
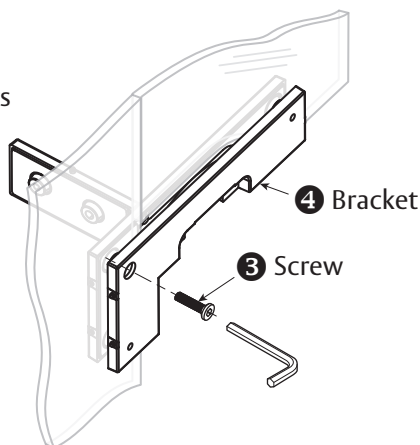
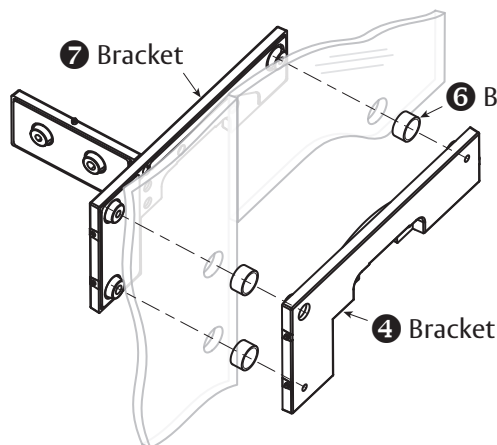
- Dispose the three shipping spacers.
- Attach Bracket 13 to Bracket 7 with Screws 9 using screwdriver ensuring that the bushing side of Bracket 13 is facing the hinge side of glass.



## 3. Fasten Support Brackets

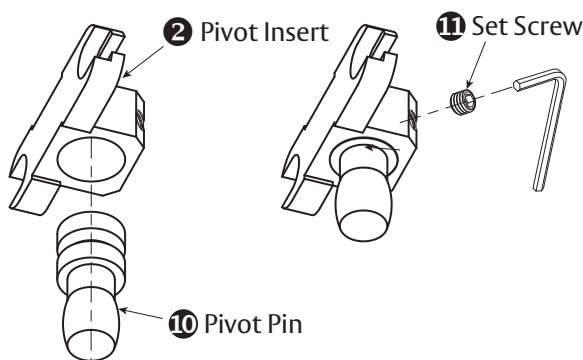
Make sure the surface is thoroughly cleaned and remove all screws.

- Insert three Bushings 6 into prepped  $\frac{13}{16}$ " (20 mm) diameter holes to join Brackets 4 & 7.
- Place Bracket 4 into prepped area of glass, join Bracket 7 from the other side. Insert Screw 3 into main center hole of Bracket 4 and tighten with 5 mm hex wrench to hold Brackets together. Do not tighten completely to allow for adjustments throughout installation.
- Insert 2 Screws 3 into Bracket 7, align fitting to desired position. Torque both Screws to 12 nm. Then tighten center Screw to 12 nm.



## 4. Install Pivot Pin

- Place Pivot Pin 10 into Pivot Insert 2.
- Place Set Screw 11 into set screw hole on Pivot Insert.
- Tighten Set Screw 11 using the 3mm hex wrench to hold Pivot Pin 10 in place.



**ASSA ABLOY**

The global leader in  
door opening solutions

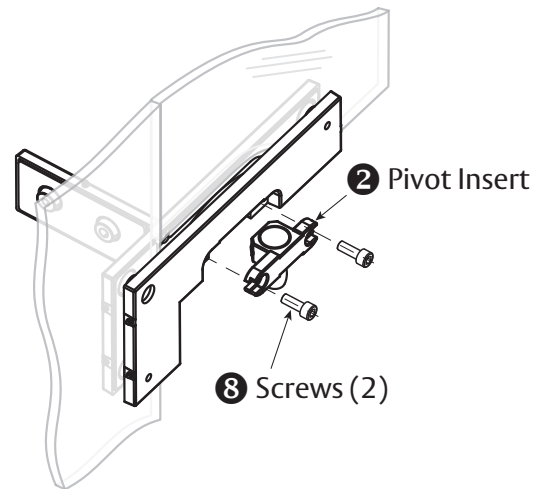
Copyright © 2017, ASSA ABLOY Inc. All rights reserved. Reproduction in whole or in part without the express written permission of ASSA ABLOY Inc. is prohibited.

PFT-41 - 06/17

## 5. Install Pivot Insert

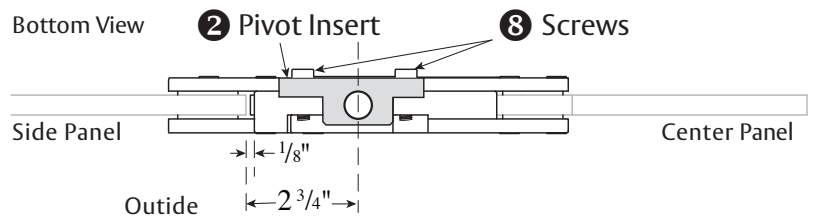
Ensuring that the long leg is toward the hinge side of the glass.

- Insert Screws **8** on either side of Pivot Insert **2** to secure to patch fitting.
- Do not tighten completely to allow for adjustments throughout installation.



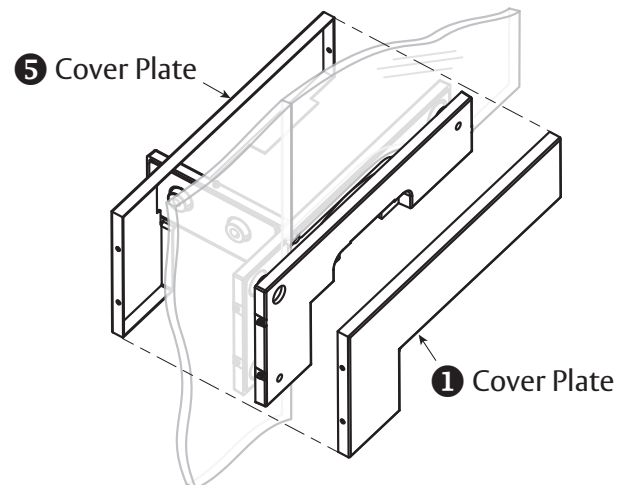
## 6. Align Pivot Insert

- Alignment of Pivot Insert **2** is determined by pivot pin.
- After alignment, torque Pivot Screws **8** to 12 nm in alternating fashion.



## 7. Adhere Cover Plates

- Remove adhesive strip paper on both Brackets (**4**, **7**) to adhere Cover Plates **5** & **1**.
- Hook Cover Plates **5** & **1** over hinge side locking pins.
- Push in spring loaded locking pin on opposite side of Bracket.
- Snap on Cover Plates.



**ASSA ABLOY**

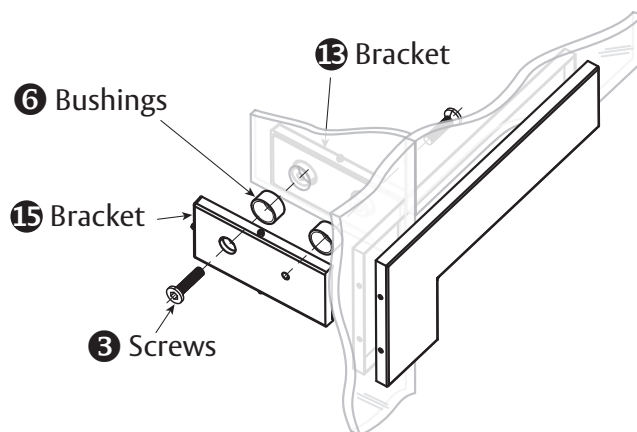
The global leader in  
door opening solutions

Copyright © 2017, ASSA ABLOY Inc. All rights reserved. Reproduction in whole or in part without the express written permission of ASSA ABLOY Inc. is prohibited.

PFT-41 - 06/17

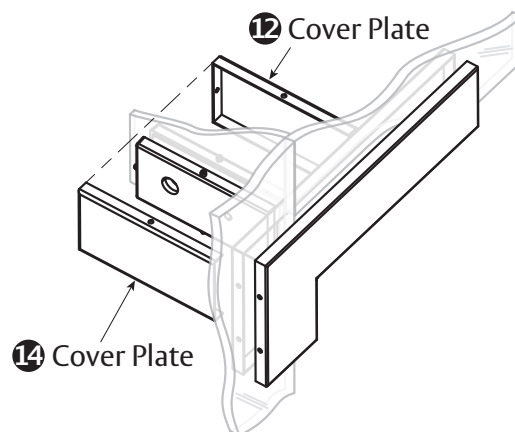
## 8. Install Fin

- Insert two Bushings **6** into prepped 20 mm (.757") diameter holes to join Brackets **13** & **15**.
- Place Bracket **13** into prepped area of glass, join Bracket **15** from the other side. Insert Screw **3** into hole and tighten with 5 mm hex wrench to hold Brackets together. Do not tighten completely to allow for adjustments throughout installation.
- Insert Screw **3** into Bracket **13**, align fitting to desired position. Torque both Screws **3** to 12 nm.



## 9. Adhere Fin Cover Plates

- Remove adhesive strip paper on both Brackets **13** & **15** to adhere Cover Plates **12** & **14**.
- Hook Cover Plates **12** & **14** over hinge side locking pin.
- Push in spring loaded locking pins on top and bottom of Bracket.
- Snap on Cover Plates.



**ASSA ABLOY**

The global leader in  
door opening solutions

Copyright © 2017, ASSA ABLOY Inc. All rights reserved. Reproduction in whole or in part without the express written permission of ASSA ABLOY Inc. is prohibited.

PFT-41 - 06/17

**5**

ASSA ABLOY is the global  
leader in door opening solutions,  
dedicated to satisfying  
end-user needs for security,  
safety and convenience

**ASSA ABLOY**

---

[www.assaabloyglass.us](http://www.assaabloyglass.us)

USA:  
ASSA ABLOY Glass Solutions  
Rockwood, PA 15557  
Phone: 855.594.6989