

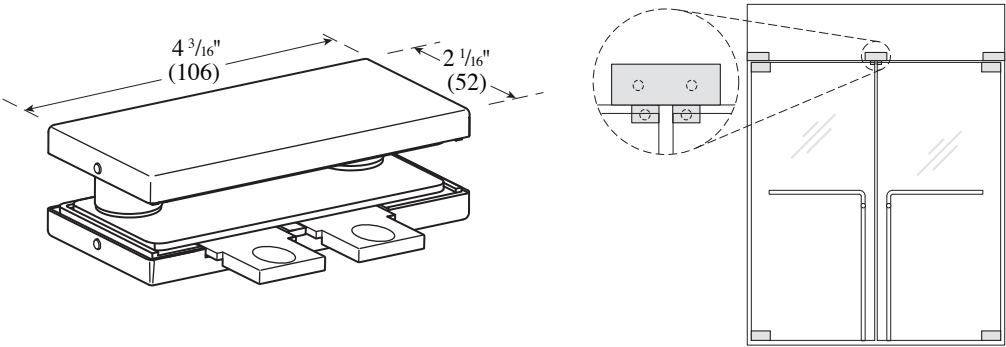
# PFT-70 Transom Stop Patch Installation Instructions

**ASSA ABLOY**

The global leader in  
door opening solutions

For Installation Assistance, Call 855.594.6989 • [www.assaabloyglass.us](http://www.assaabloyglass.us)

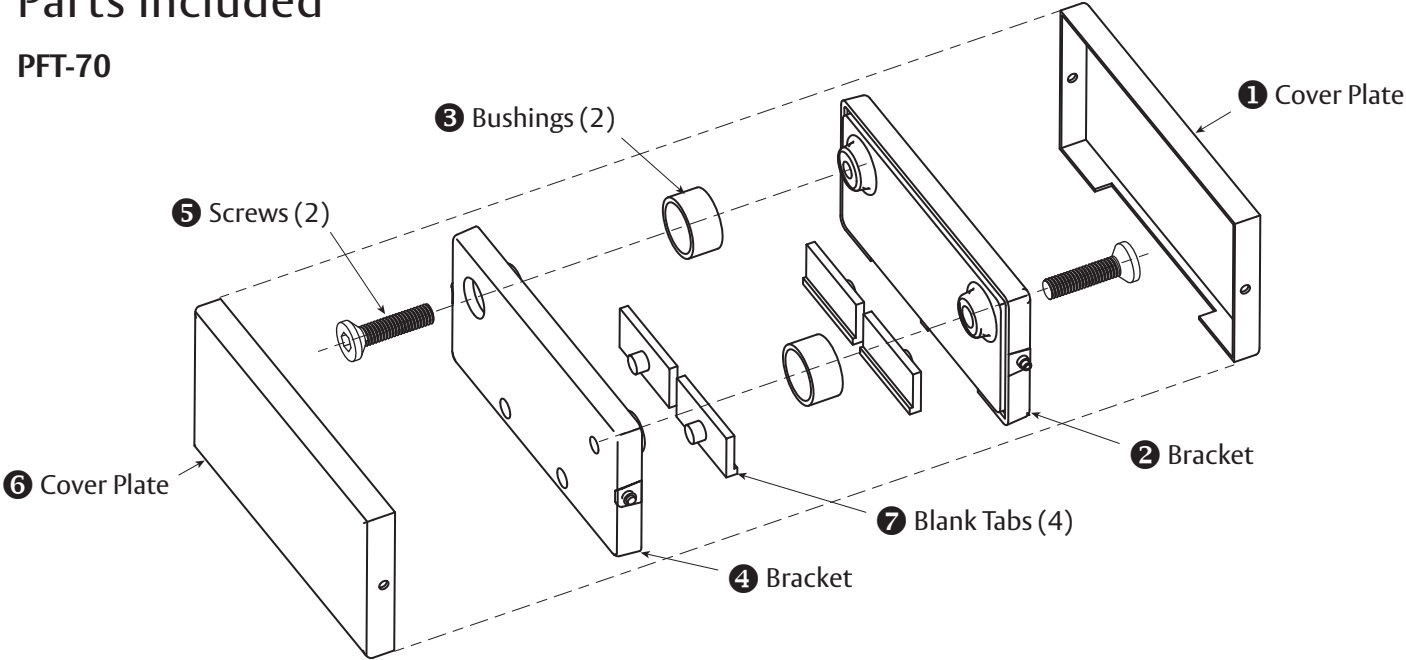
**Tools Needed:**  
Torque Wrench and Bit  
5mm Hex Wrench



NOT TO SCALE

## Parts Included

PFT-70



PFT-70 Parts List

1	Cover Plate
2	Bracket
3	Bushings (2)
4	Bracket
5	$1\frac{1}{16}"$ - M6 x 27 Screws (2)
6	Cover Plate
7	Blank Tab Accessories (4)

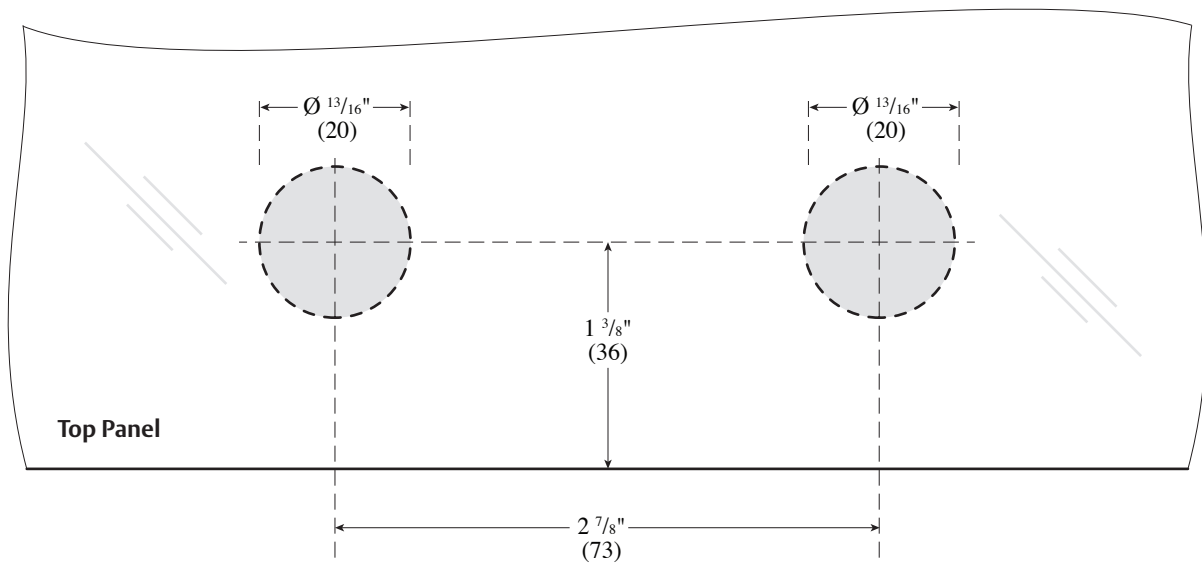
# 1. Prepare the Glass

## USE FABRICATION SKETCH TO DRILL GLASS.

- Drill two  $\frac{13}{16}$ " (20 mm) diameter holes.

NOT TO SCALE

DIMENSIONS IN INCHES (MILLIMETERS)



**Caution:** Office copiers, printers and facsimile machines may change the size of a drawing and make it inaccurate to use as a template.

# 2. Fasten Stop Tab

- Gently pull back adhered gasket to remove blank tabs & insert Stop Tabs **7** onto the appropriate bracket (**2** or **4**) depending on door configuration and swing.

DIAGRAM SHOWS BRACKET **4** APPLICATION ONLY.

**ASSA ABLOY**

The global leader in  
door opening solutions

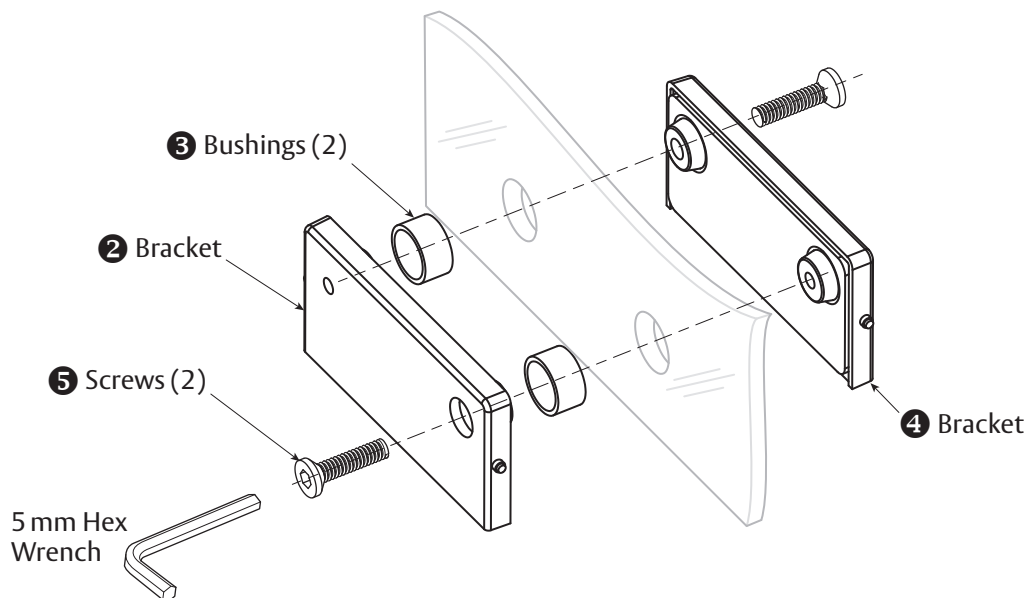
Copyright © 2017, ASSA ABLOY Inc. All rights reserved. Reproduction in whole or in part without the express written permission of ASSA ABLOY Inc. is prohibited.

PFT-70 - 06/17

### 3. Fasten Support Brackets

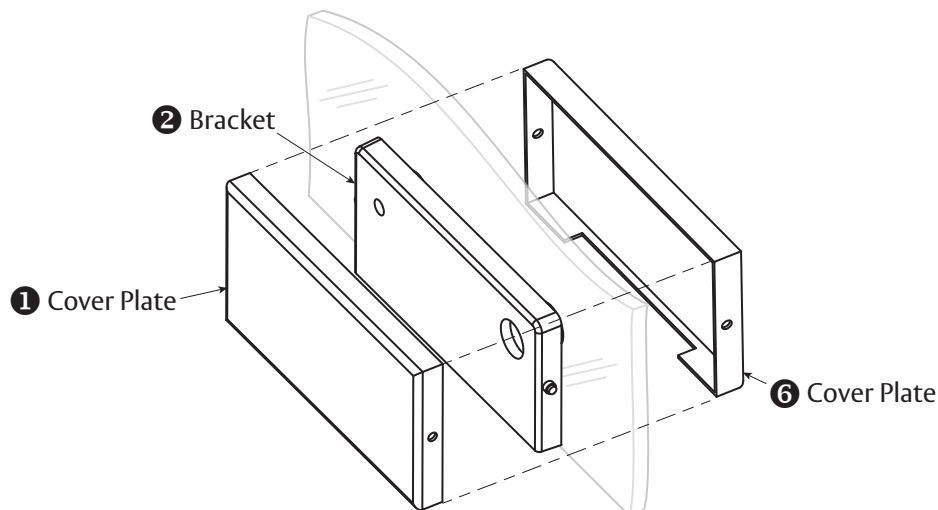
Make sure the surface is thoroughly cleaned and remove all screws.

- Insert the two Bushings **3** into prepped  $\frac{13}{16}$ " (20 mm) diameter holes.
- Place Bracket **2** into prepped area of glass door, join Bracket **4** from the other side (If using stop tabs, be sure to position brackets correctly according to door opening direction). Insert Screw **5** into Bracket **4** and tighten with 5 mm Hex Wrench to hold Brackets together. Do not tighten completely to allow for adjustments throughout installation.
- Insert remaining Screw **5** into Bracket **2**, align fitting to desired position. Torque both Screws to 12 nm.



### 4. Adhere Cover Plates

- Remove adhesive strip paper on both Brackets (**2**, **4**) to adhere Cover Plates **1** & **6**.
- Hook Cover Plates **1** & **6** over hinge side locking pin.
- Push in spring loaded locking pin on opposite side of Bracket.
- Snap on Cover Plates.



**ASSA ABLOY**

The global leader in  
door opening solutions

Copyright © 2017, ASSA ABLOY Inc. All rights reserved. Reproduction in whole or in part without the express written permission of ASSA ABLOY Inc. is prohibited.

PFT-70 - 06/17

**3**

ASSA ABLOY is the global  
leader in door opening solutions,  
dedicated to satisfying  
end-user needs for security,  
safety and convenience

**ASSA ABLOY**

---

[www.assaabloyglass.us](http://www.assaabloyglass.us)

USA:  
ASSA ABLOY Glass Solutions  
Rockwood, PA 15557  
Phone: 855.594.6989