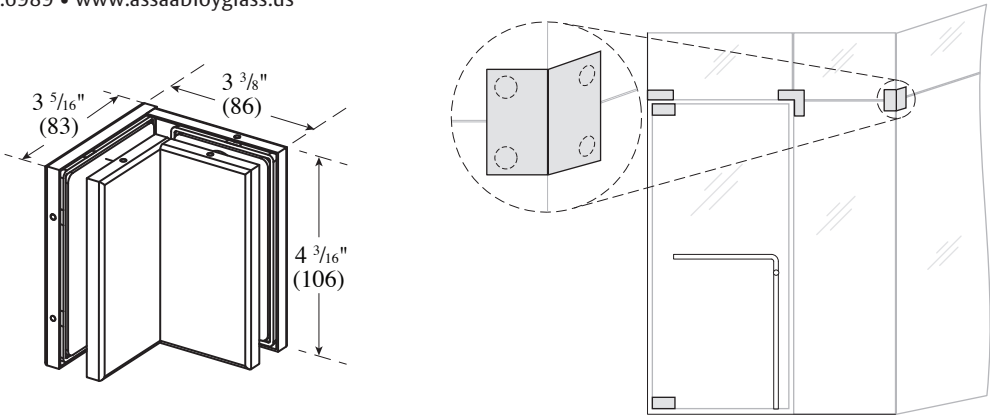


# PFA-90 Patch Fitting Angle Connector Installation Instructions

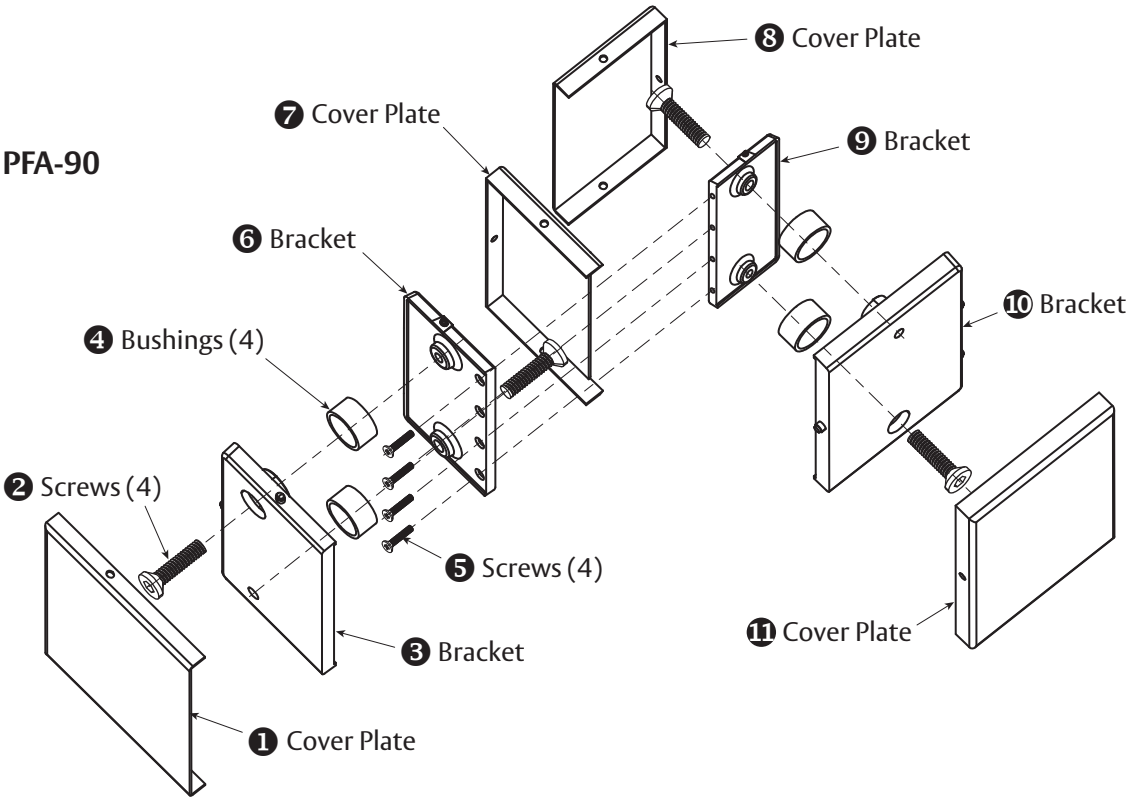
For Installation Assistance, Call 855.594.6989 • [www.assaabloyglass.us](http://www.assaabloyglass.us)

**Tools Needed:**  
Torque Wrench and Bit  
Screwdriver (Phillips)  
5mm Hex Wrench

NOT TO SCALE



## Parts Included



PFA-90 Parts List

1	Cover Plate
2	1 1/16" - M6 x 27 Screws (4)
3	Bracket
4	Bushings (4)
5	3/4" - M4 x 20 Phillips Head Screws (4)
6	Bracket

7	Cover Plate
8	Cover Plate
9	Bracket
10	Bracket
11	Cover Plate

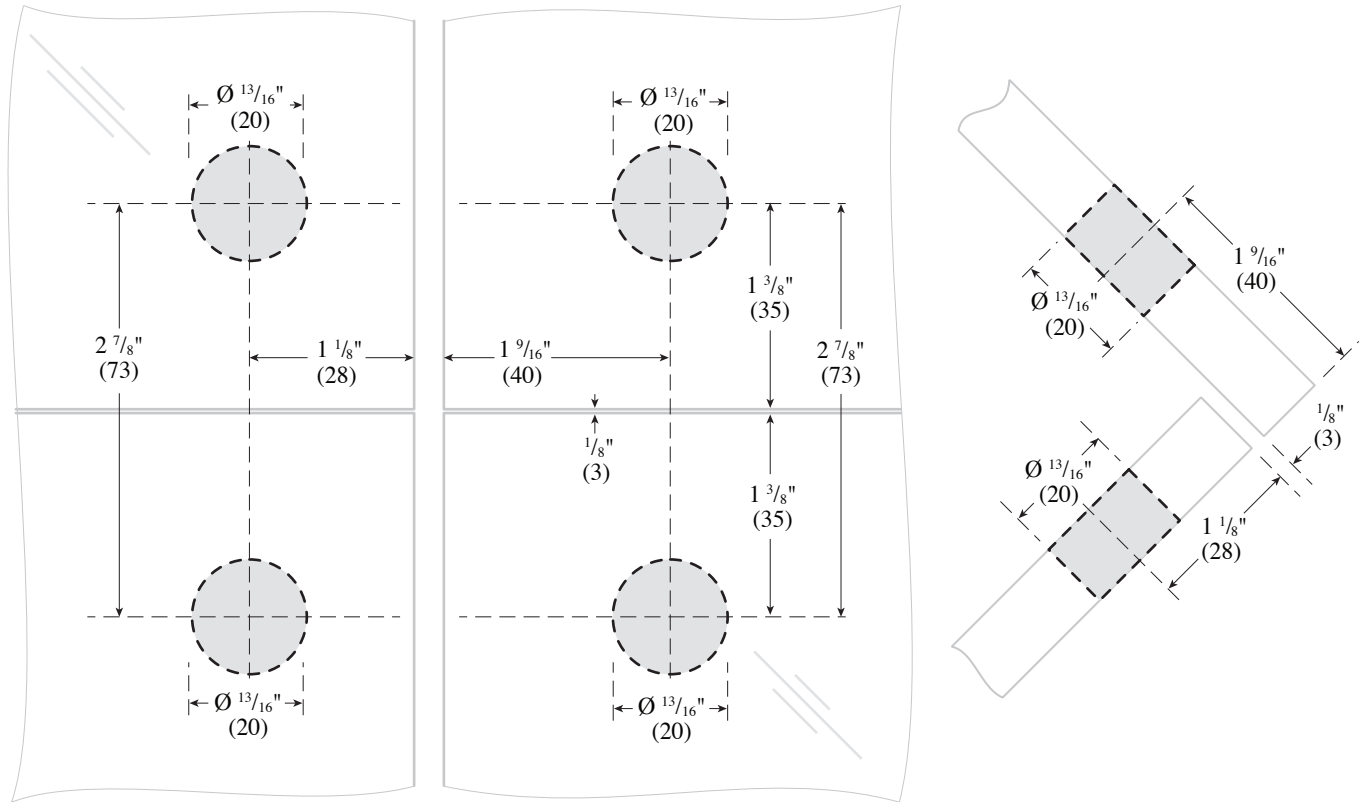
# 1. Prepare the Glass

## USE FABRICATION SKETCH TO DRILL GLASS.

- Drill four  $\frac{13}{16}$ " (20 mm) diameter holes.

NOT TO SCALE

DIMENSIONS IN INCHES (MILLIMETERS)



**Caution:** Office copiers, printers and facsimile machines may change the size of a drawing and make it inaccurate to use as a template.

**ASSA ABLOY**

The global leader in  
door opening solutions

Copyright © 2017, ASSA ABLOY Inc. All rights reserved. Reproduction in whole or in part without the express written permission of ASSA ABLOY Inc. is prohibited.

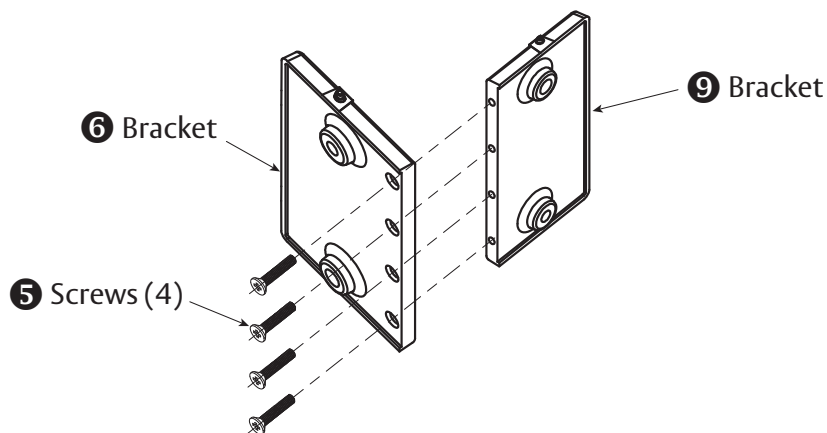
PFA-90 - 06/17

## 2. Attach Angle Brackets

Make sure the surface is thoroughly cleaned and remove all screws.

Should be 'preassembled'. If not, complete this step.

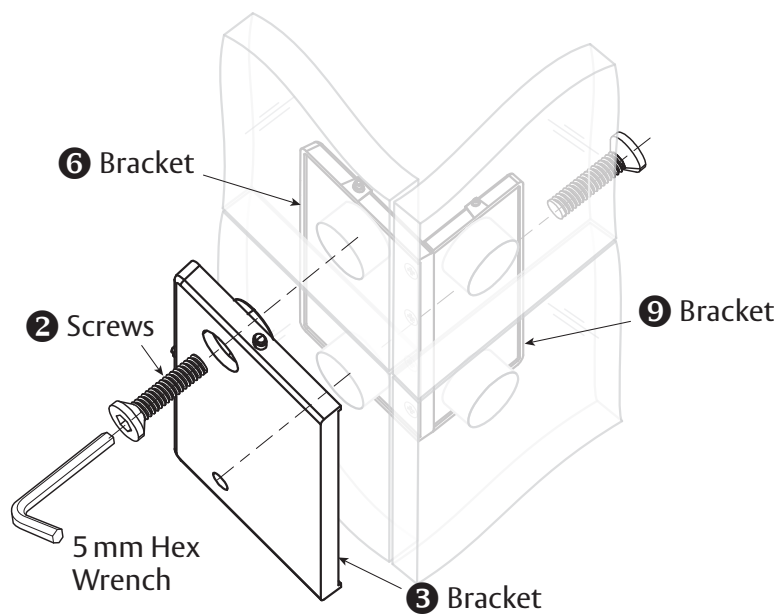
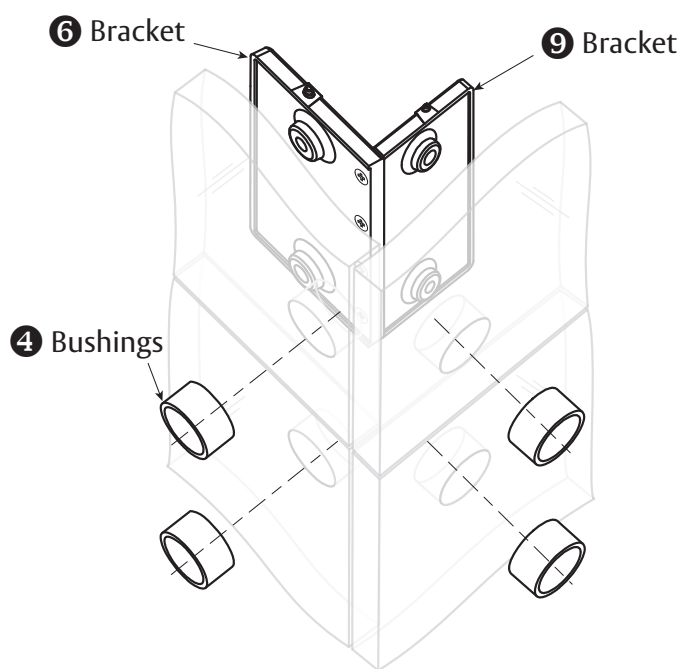
- Attach Bracket ⑥ to Bracket ⑨ with Screws ⑤ using screwdriver ensuring that the bushing sides of Brackets ⑥ and ⑨ are facing the glass.



## 3a. Fasten Support Brackets

Make sure the surface is thoroughly cleaned and remove all screws.

- Insert four Bushings ④ into prepped  $\frac{13}{16}$ " (20 mm) diameter holes.
- Place assembled angle Brackets ⑥ & ⑨ into prepped area of glass
- Join Bracket ③ to Bracket ⑥ from the other side. Insert two Screws ② into holes and tighten with 5mm hex wrench to hold Brackets together. Do not tighten completely to allow for adjustments throughout installation.



**ASSA ABLOY**

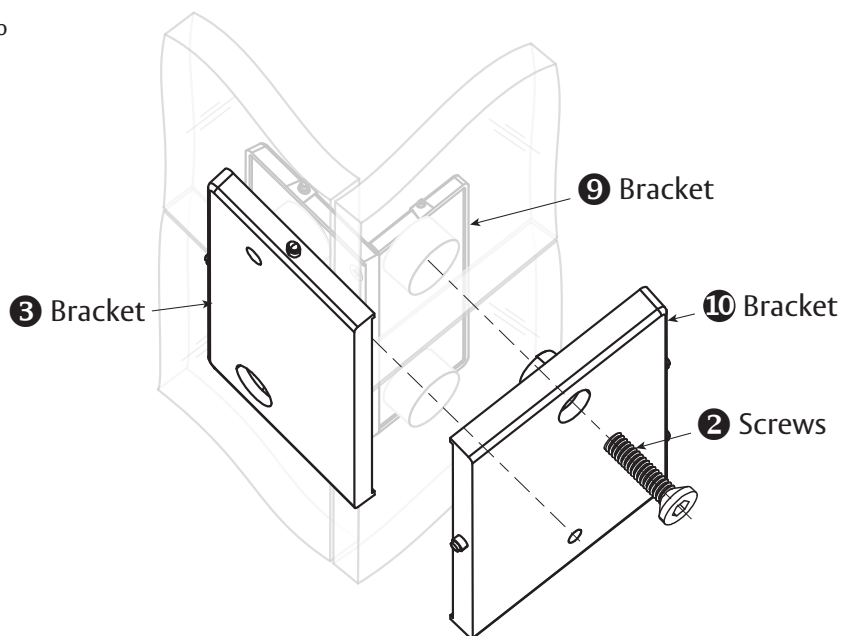
The global leader in  
door opening solutions

Copyright © 2017, ASSA ABLOY Inc. All rights reserved. Reproduction in whole or in part without the express written permission of ASSA ABLOY Inc. is prohibited.

PFA-90 - 06/17

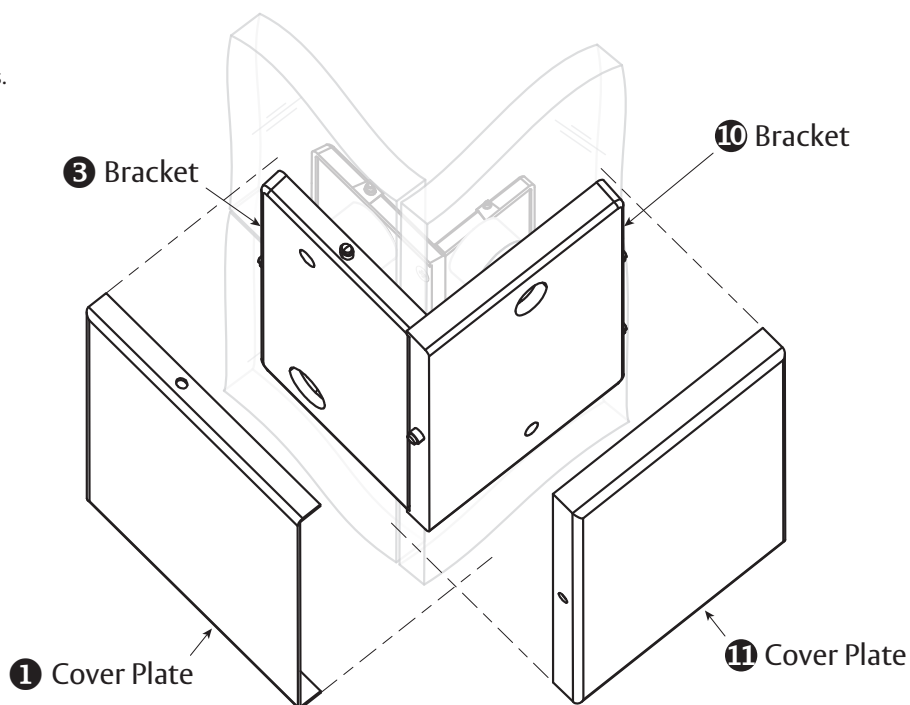
## 3b. Fasten Support Brackets

- Join Bracket **10** to Bracket **9** from the other side. Insert two Screws **2** into holes and tighten with 5mm hex wrench to hold Brackets together. Do not tighten completely to allow for final adjustments.
- Align fitting to desired position.  
Torque all four Screws **5** to 12 nm.



## 4a. Adhere Cover Plates

- Remove adhesive strip paper on both Brackets **3** & **10** to adhere Cover Plates **1** & **11**.
- Hook Cover Plates **1** & **11** over top fixed locking pins.
- Push in spring loaded locking pins on side of Bracket.
- Snap on Cover Plates.



**ASSA ABLOY**

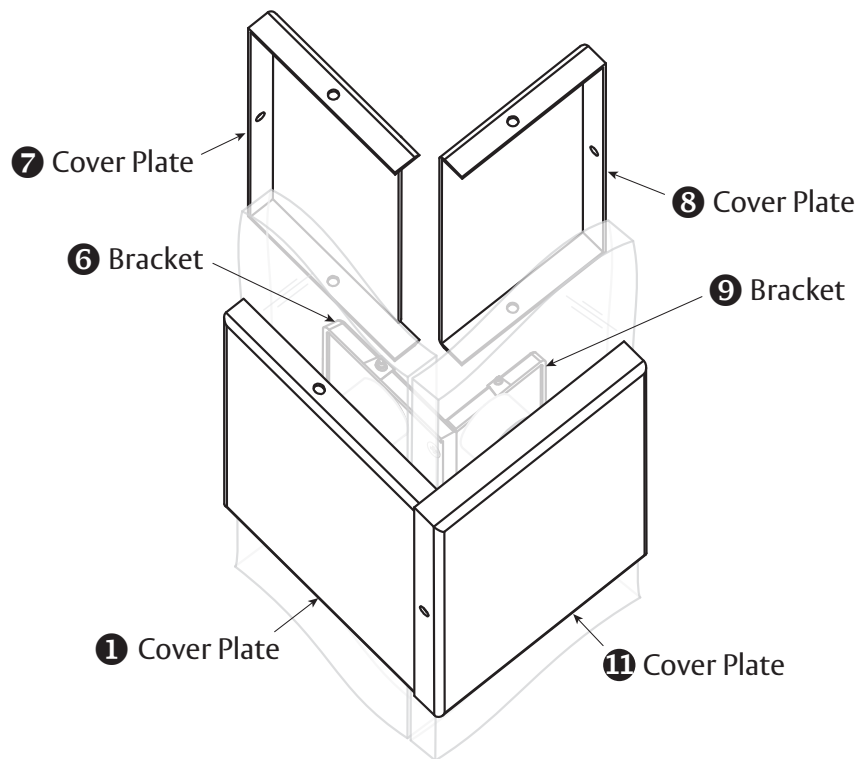
The global leader in  
door opening solutions

Copyright © 2017, ASSA ABLOY Inc. All rights reserved. Reproduction in whole or in part without the express written permission of ASSA ABLOY Inc. is prohibited.

PFA-90 - 06/17

## 4b. Adhere Cover Plates

- Remove adhesive strip paper on both Brackets **6** & **9** to adhere Cover Plates **7** & **8**.
- Hook Cover Plates **7** & **8** over side fixed locking pins.
- Push in spring loaded locking pins on top and bottom of Brackets.
- Snap on Cover Plates.



ASSA ABLOY is the global  
leader in door opening solutions,  
dedicated to satisfying  
end-user needs for security,  
safety and convenience

---

**ASSA ABLOY**

---

[www.assaabloyglass.us](http://www.assaabloyglass.us)

USA:  
ASSA ABLOY Glass Solutions  
Rockwood, PA 15557  
Phone: 855.594.6989