

PFS-81 Sidelite Connector w/Fin Installation Instructions

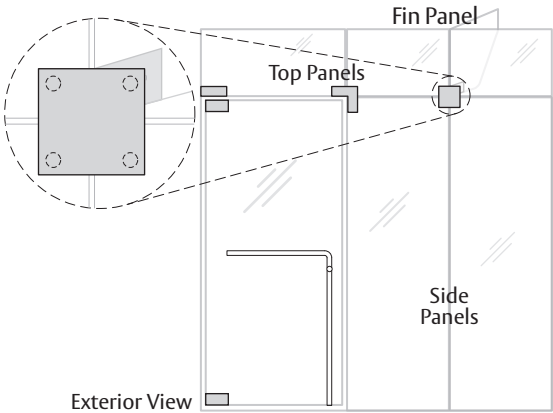
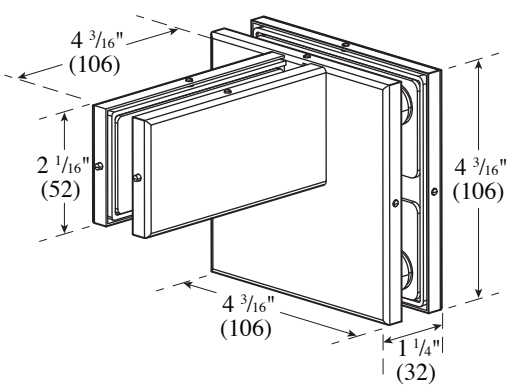
ASSA ABLOY

The global leader in
door opening solutions

For Installation Assistance, Call 855.594.6989 • www.assaabloyglass.us

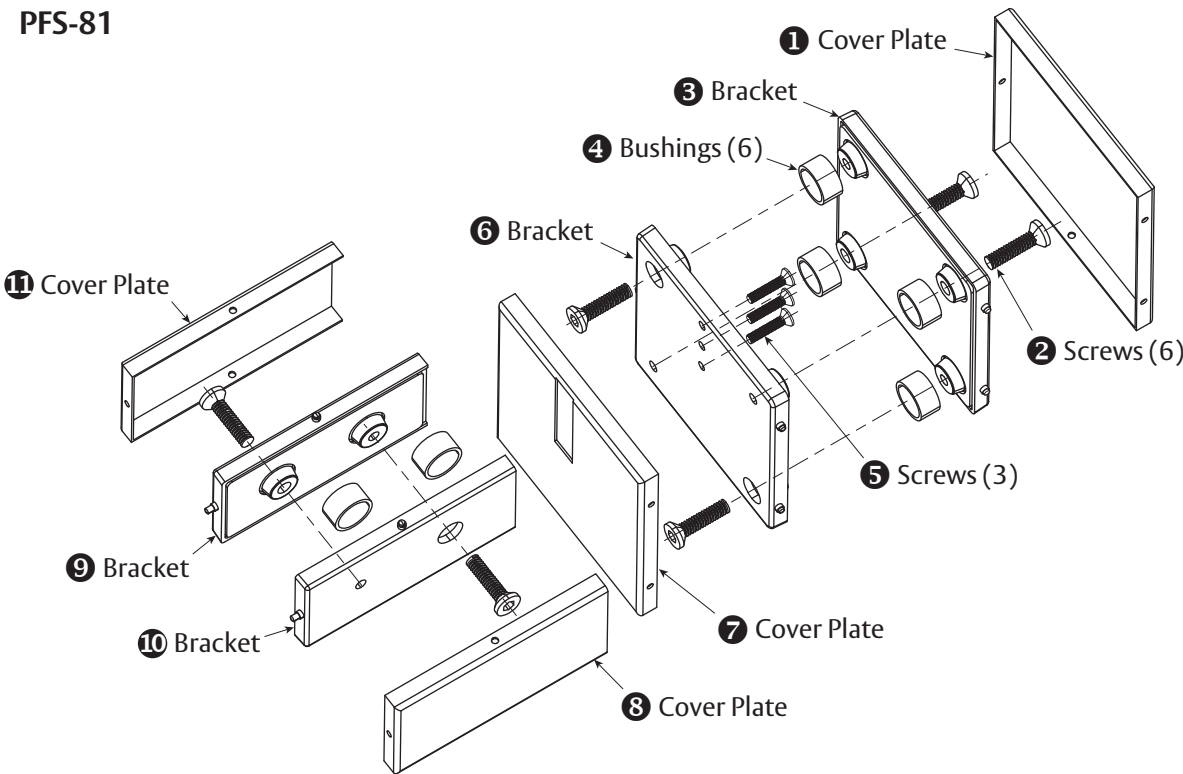
Tools Needed:
Torque Wrench and Bit
Screwdriver (Phillips)
5mm Hex Wrench

NOT TO SCALE



Parts Included

PFS-81



PFS-81 Parts List

1	Cover Plate
2	1 1/16" - M6 x 27 Screws (6)
3	Bracket
4	Bushings (6)
5	3/4" - M4 x 20 Phillips Head Screws (3)
6	Bracket

7	Cover Plate
8	Cover Plate
9	Bracket
10	Bracket
11	Cover Plate

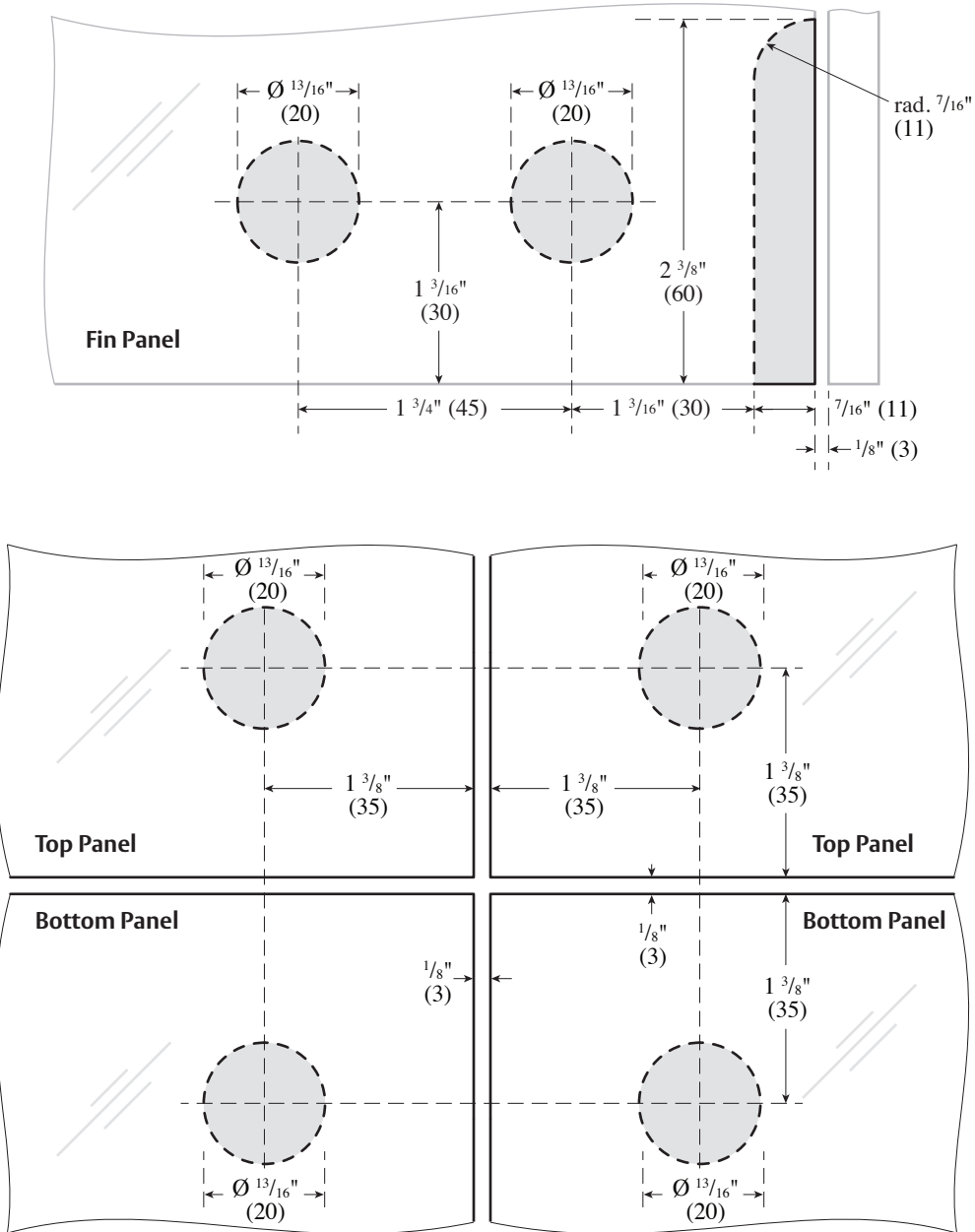
1. Prepare the Glass

USE FABRICATION SKETCH TO DRILL AND CUT GLASS.

- Cut away glass (shaded area) along dotted line to match sketch dimensions.
- Drill six $\frac{13}{16}$ " (20 mm) diameter holes.

NOT TO SCALE

DIMENSIONS IN INCHES (MILLIMETERS)



Caution: Office copiers, printers and facsimile machines may change the size of a drawing and make it inaccurate to use as a template.

ASSA ABLOY

The global leader in
door opening solutions

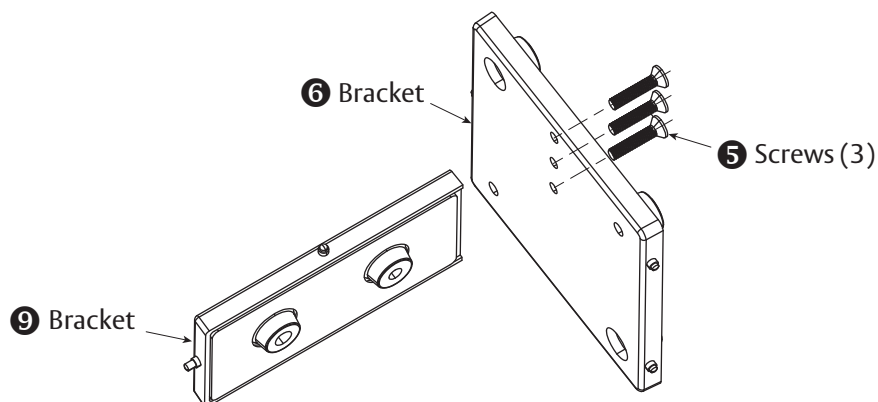
Copyright © 2017, ASSA ABLOY Inc. All rights reserved. Reproduction in whole or in part
without the express written permission of ASSA ABLOY Inc. is prohibited.

PFS-81 - 06/17

2. Attach Fin to Support Bracket

Make sure the surface is thoroughly cleaned and remove all screws.

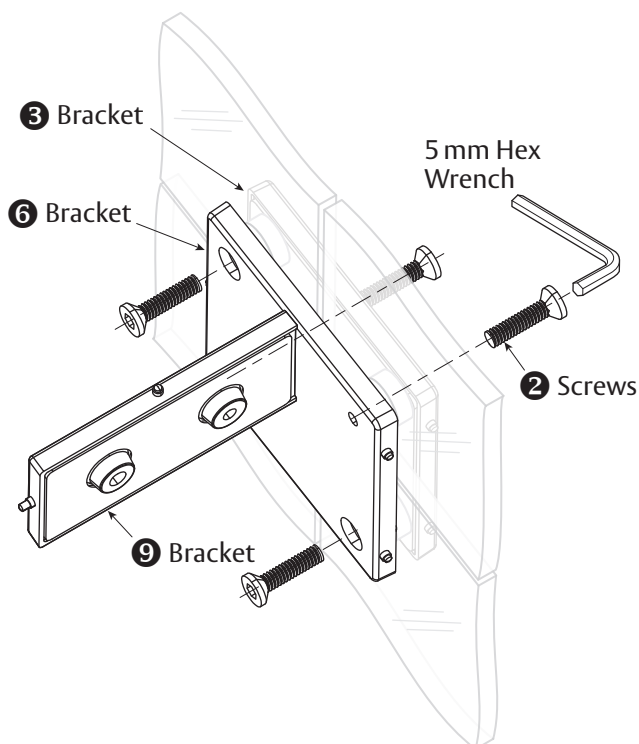
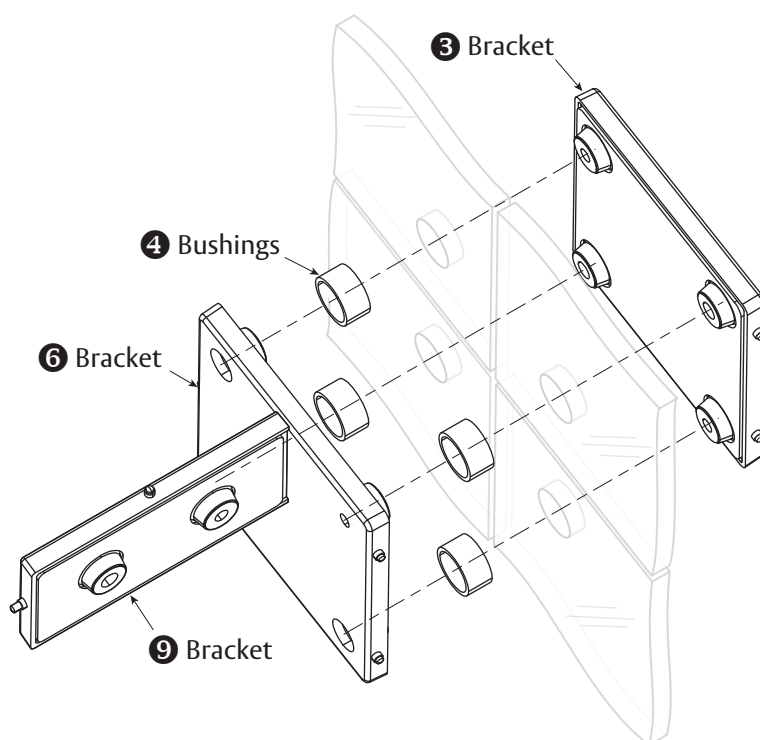
- Attach Bracket ⑨ to Bracket ⑥ with Screws ⑤ using screwdriver ensuring that the bushing side of Bracket ⑥ is facing the glass.



3. Fasten Support Brackets

Make sure the surface is thoroughly cleaned and remove all screws.

- Insert four Bushings ④ into prepped $\frac{13}{16}$ " (20 mm) diameter holes to join Brackets ③ & ⑥.
- Place Bracket ⑥ into prepped area of glass, join Bracket ③ from the other side. Insert four Screws ② into holes and tighten with 5mm hex wrench to hold brackets together. Do not tighten completely to allow for adjustments throughout installation.
- Align fitting to desired position. Torque four Screws ② to 12 nm.



ASSA ABLOY

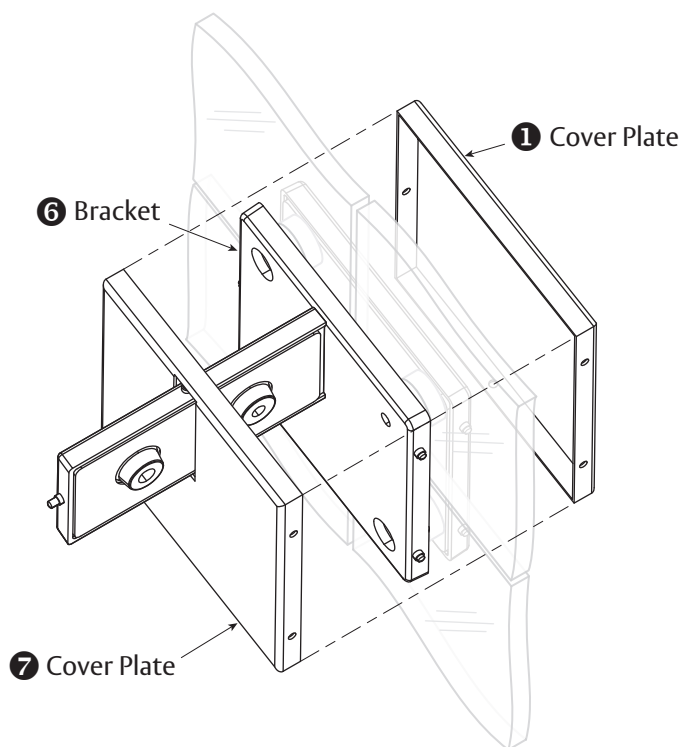
The global leader in
door opening solutions

Copyright © 2017, ASSA ABLOY Inc. All rights reserved. Reproduction in whole or in part without the express written permission of ASSA ABLOY Inc. is prohibited.

PFS-81 - 06/17

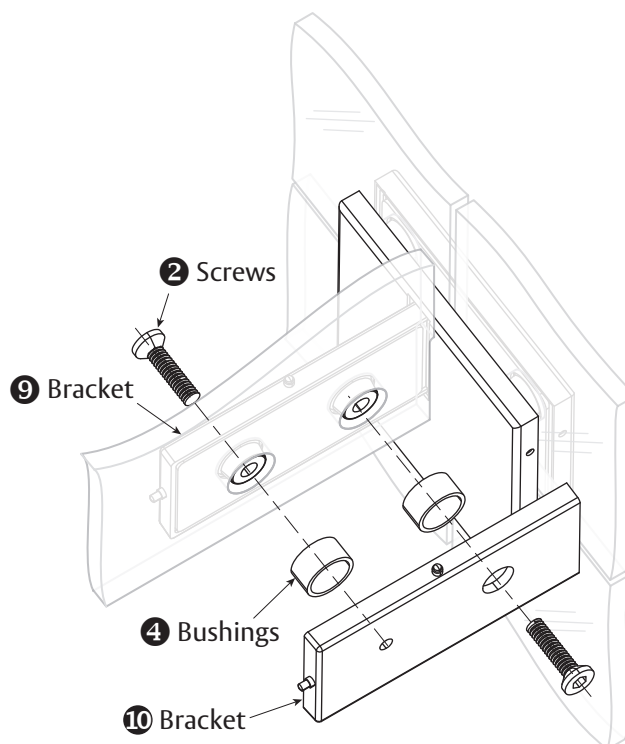
4. Adhere Cover Plates

- Remove adhesive strip paper on both Brackets **3** & **6** to adhere Cover Plates **1** & **7**.
- Hook Cover Plates **1** & **7** over hinge side locking pins.
- Push in spring loaded locking pin on opposite side of Bracket.
- Snap on Cover Plates.



5. Install Fin

- Insert two Bushings **4** into prepped $\frac{13}{16}$ " (20 mm) diameter holes to join Brackets **9** & **10**.
- Place Bracket **9** into prepped area of glass, join Bracket **10** from the other side. Insert Screw **2** into Bracket **9** hole and tighten with 5mm hex wrench to hold Brackets together. Do not tighten completely to allow for adjustments throughout installation.
- Insert remaining Screw **2** into Bracket **10**, align fitting to desired position. Torque both Screws **2** to 12 nm.



ASSA ABLOY

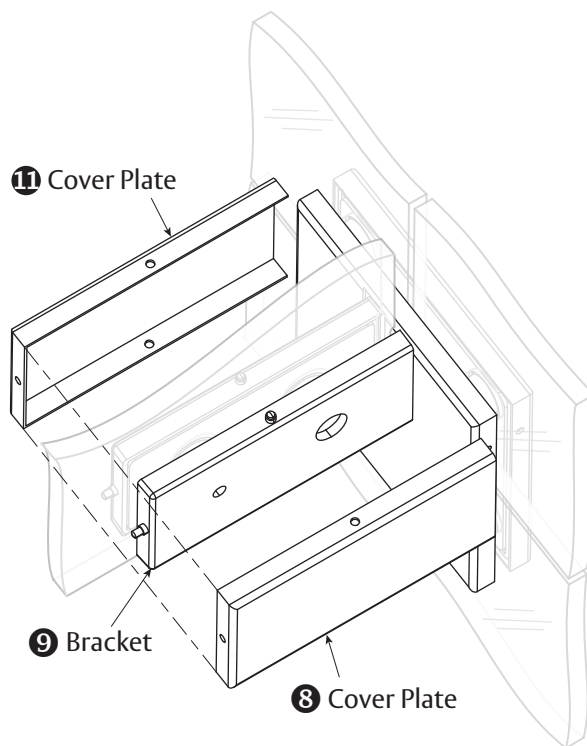
The global leader in
door opening solutions

Copyright © 2017, ASSA ABLOY Inc. All rights reserved. Reproduction in whole or in part without the express written permission of ASSA ABLOY Inc. is prohibited.

PFS-81 - 06/17

6. Adhere Cover Plates

- Remove adhesive strip paper on both Brackets **9** & **10** to adhere Cover Plates **8** & **11**.
- Hook Cover Plates **8** & **11** over hinge side locking pin.
- Push in spring loaded locking pins on top & bottom of Bracket.
- Snap on Cover Plates.



ASSA ABLOY

The global leader in
door opening solutions

Copyright © 2017, ASSA ABLOY Inc. All rights reserved. Reproduction in whole or in part without the express written permission of ASSA ABLOY Inc. is prohibited.

PFS-81 - 06/17

5

ASSA ABLOY is the global
leader in door opening solutions,
dedicated to satisfying
end-user needs for security,
safety and convenience

ASSA ABLOY

www.assaabloyglass.us

USA:
ASSA ABLOY Glass Solutions
Rockwood, PA 15557
Phone: 855.594.6989