

HYD-HINGE Glass Door to Glass Sidelite Hydraulic Hinge Instructions

NOTE: When installing ADA version of HYD-HINGE, the hydraulic hinge will mount at the bottom location, while the dummy hinge (SOL) mounts at the top location.

Instructions

1. Attach Hinges to Glass Sidelite

A: Align hinge to sidelite holes.

B: Tighten screws with Allen wrench.

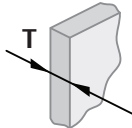
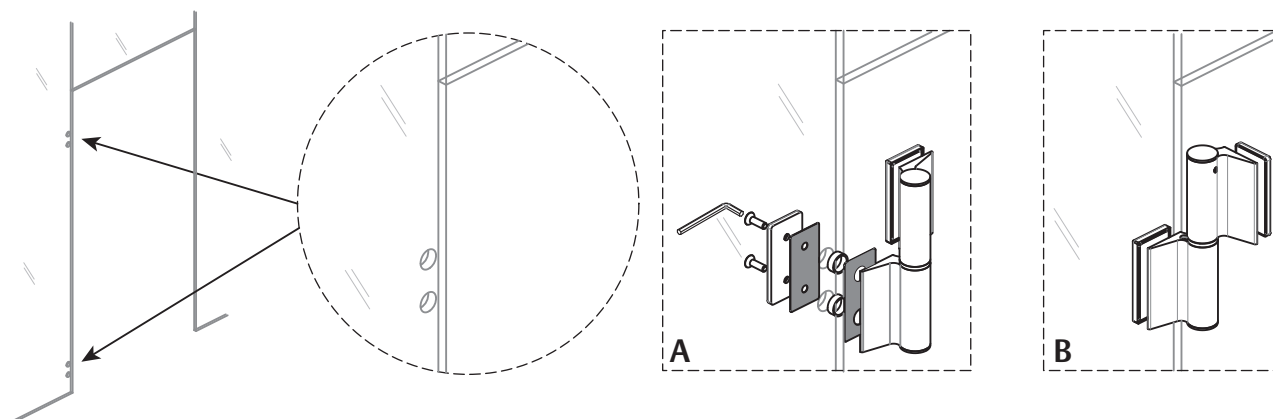
GLASS	T	SCREW
	$\frac{5}{16}" - \frac{3}{8}"$	M6x16
	$\frac{3}{8}" - \frac{1}{2}"$	M6x20
	$\frac{1}{2}" - \frac{11}{16}"$	M6x25
	$\frac{11}{16}" - \frac{7}{8}"$	M6x30

Figure 1

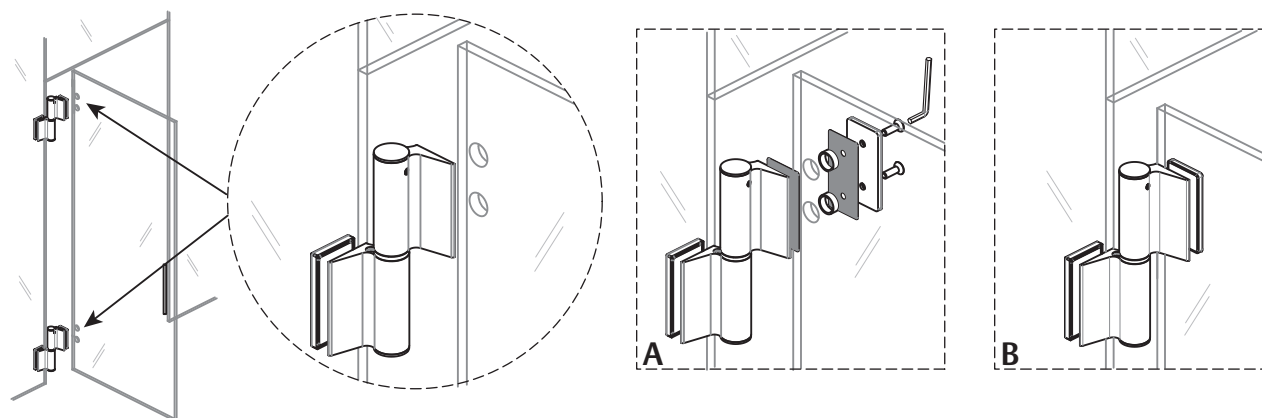


2. Attach Glass Door

A: Align hinge to door holes.

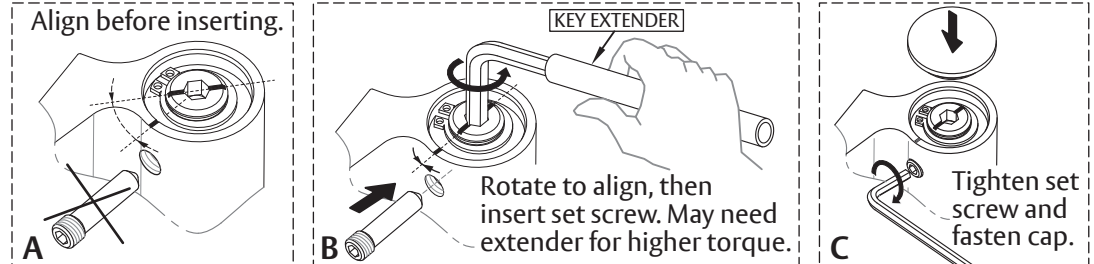
B: Tighten screws with Allen wrench.

See [Figure 1](#) for reference.



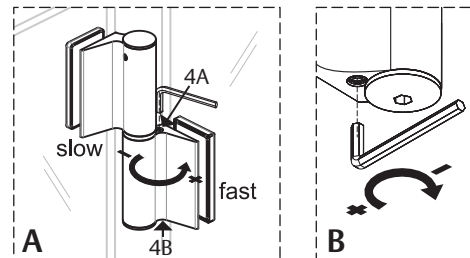
3. Align Top Hinge

- A: Align center shaft with hole.
- B: Insert set screw.
- C: Tighten set screw and fasten cap.



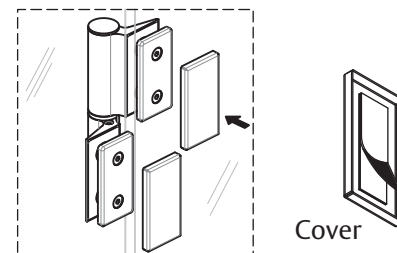
4. Adjust Closing and Latching Speed of Top Hinge

- A: Use Allen wrench to adjust closing speed.
- B: Use Allen wrench to adjust latching speed.



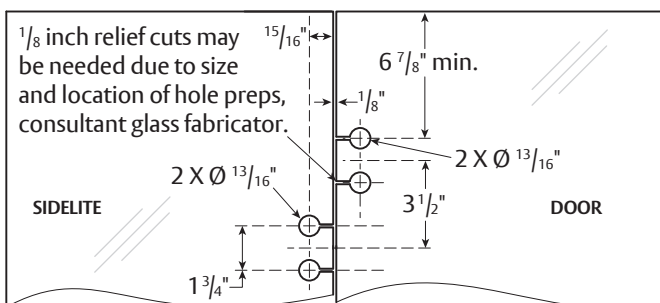
Repeat steps 4 & 5 for bottom hinge.

5. Place decorative covers on hinges.



Glass Fabrication

Top of sidelite and door shown.



Bottom location off floor.

