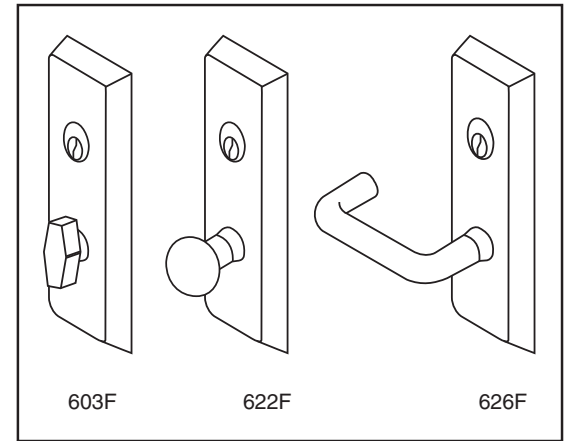
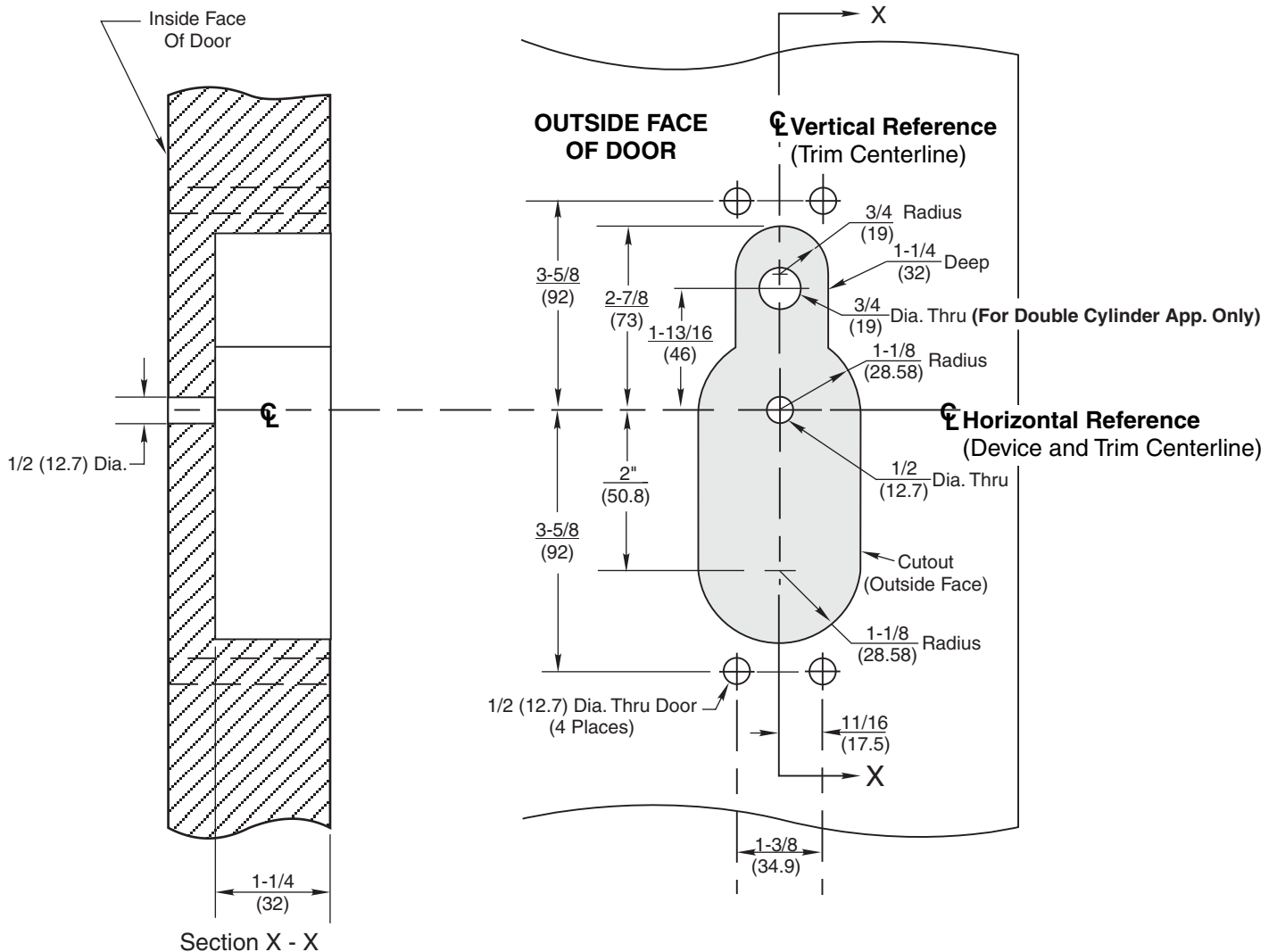


Notes:

1. This template is an addition to the device template. Locate centerlines using horizontal and vertical references on device template.
2. Do not scale drawing.
3. Dimensions are in inches (mm).
4. LHR door shown. Preparation is typical for both door hands.
5. Provide adequate structural support to maintain door integrity during operation.
6. Prepare mounting holes when installing trim.
7. Dimensions given about a centerline are symmetrical.
8. Unspecified radii 1/8 (3) maximum.



Note: Lever and knob prefix does not affect door prep.



603F, 622F and 626F Trim
 With 1500(F), 2100(F), 6100(F), or 7100(F) Series
 Rim and Vertical Rod Exit Devices
Wood or Composite Door Preparation



1-800-438-1951
 www.yalelocks.com

TEMPLATE NUMBER

7400-1622

DATE

05-15