

- Notes:**
- Do not scale drawing.
  - Right hand door shown from Pull Side.
  - All dimensions are given in inches and millimeters (mm).
  - This template information based upon use of 5" (127mm) maximum width butt hinges.
  - Ceiling clearance of 6" (152 mm) from frame rabbet is required for this application.
  - Maximum frame reveal is 1/8" (3 mm) for this application.
  - Conduit hole nearest hinge is suggested for 120 VAC power input.
  - Thickness recommended for reinforcements in hollow-metal doors and frames should provide a combined material thickness of .164" (4.2 mm) MIN.

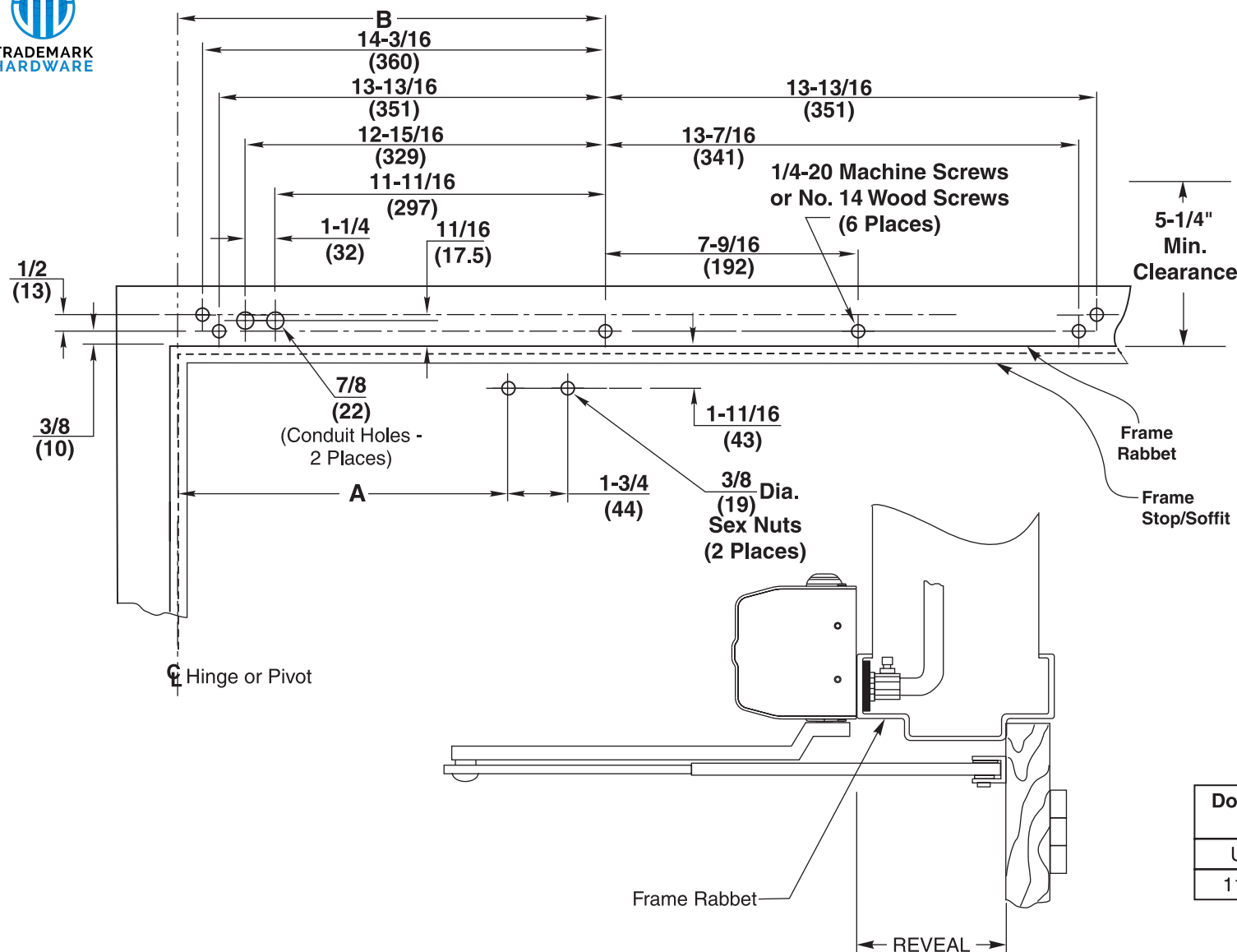
Door Opening Angle	Dim A
Up to 110°	15-1/2 (394)
111° to 180°	13-1/4 (337)

Series 5710 – Door Openings 85° to 110° or 111° to 180°  
Adjustable Arm and Slide Track Application  
Maximum Hinge Side Frame Reveal to 1/8" (3mm)  
Hinge (Pull) Side of Door Installation



ASSA ABLOY

www.nortondoorcontrols.com



#### Notes:

- Do not scale drawing.
- Left hand door shown from Push Side.
- All dimensions are given in inches and millimeters (mm).
- This template information based upon use of 5" (127 mm) maximum width butt hinges or 3/4" (19 mm) offset pivots.
- Ceiling clearance of 5-1/4" (133 mm) from frame rabbet is required for this application.
- Frame reveal range for this application is 3" (76 mm) to 7" (178 mm) for this application.
- Conduit hole nearest hinge is suggested for 120 VAC power input.
- Thickness recommended for reinforcements in hollow-metal doors and frames should provide a combined material thickness of .164" (4.2 mm) MIN.

Door Opening Angle	Dim "A"	Dim "B"
Up to 110°	12 (305)	15-3/4 (400)
111° to 170°	9-1/2 (241)	13-1/4 (337)

### Series 5730 – Door Openings 85° to 110° or 111° to 180° Double Lever Arm Application for Frame Reveals 3" to 7" (76 - 178mm) Stop (Push) Side of Door Installation

**Norton**

ASSA ABLOY

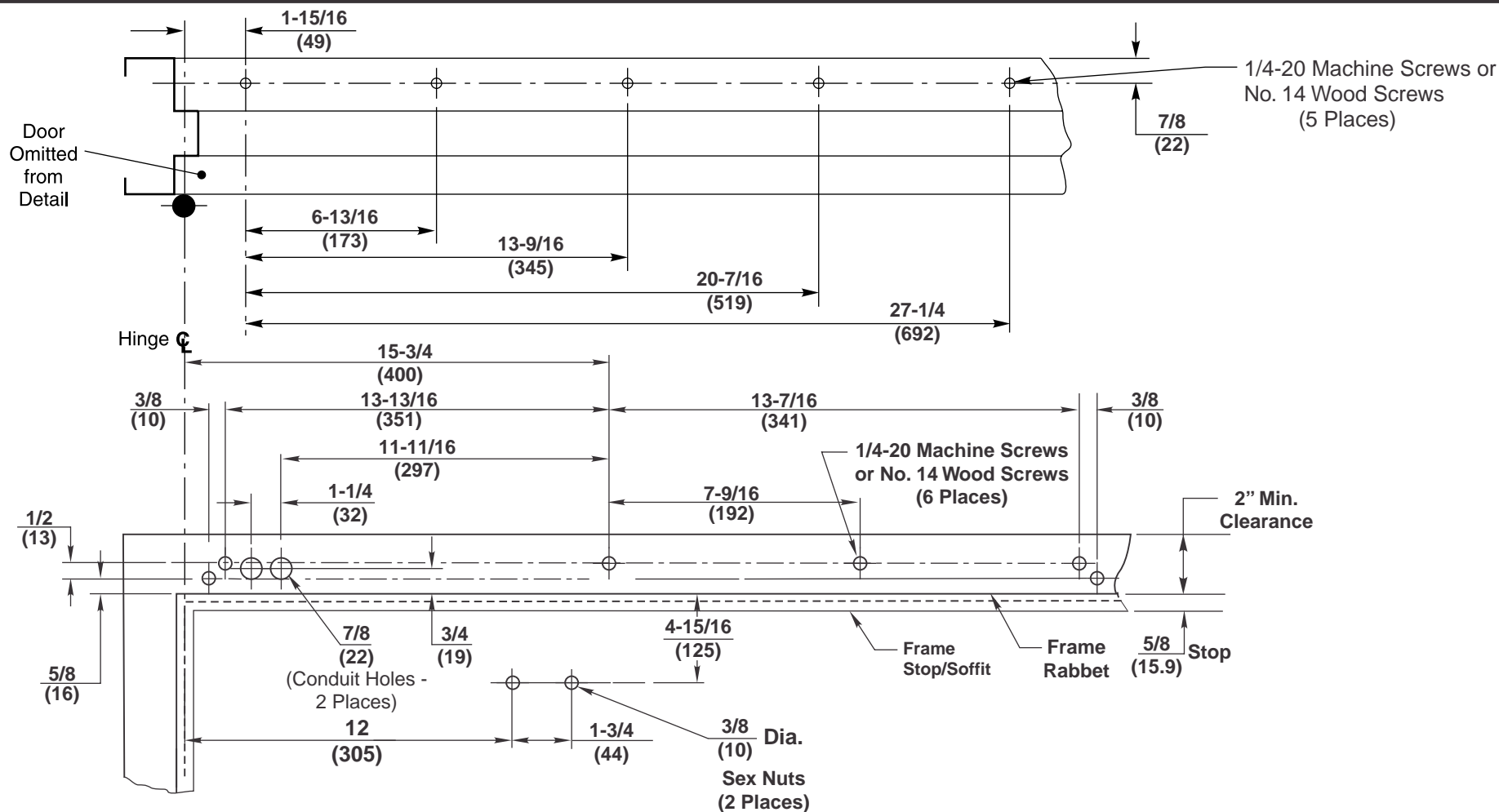
www.nortondoorcontrols.com

TEMPLATE NUMBER

**7357-0130**

DATE

**04-14**



#### Notes:

- Do not scale drawing.
- Left hand door shown for push side.
- All dimensions are given in inches and millimeters.
- Recommended thickness for reinforcements in hollow-metal doors and frames should provide a combined material thickness of .164 (4.2) MIN.
- This template information based upon use of 5 (127) maximum width butt hinges or 3/4 (19) offset pivots.

For door opening up to 110°

### 5700 Series Lower Energy Operator

### Drop Application for Stop (Push) Side of Door Installation 5700DAB

Approved 2019-11-05

1-877-974-2255

**Norton**

**ASSA ABLOY**

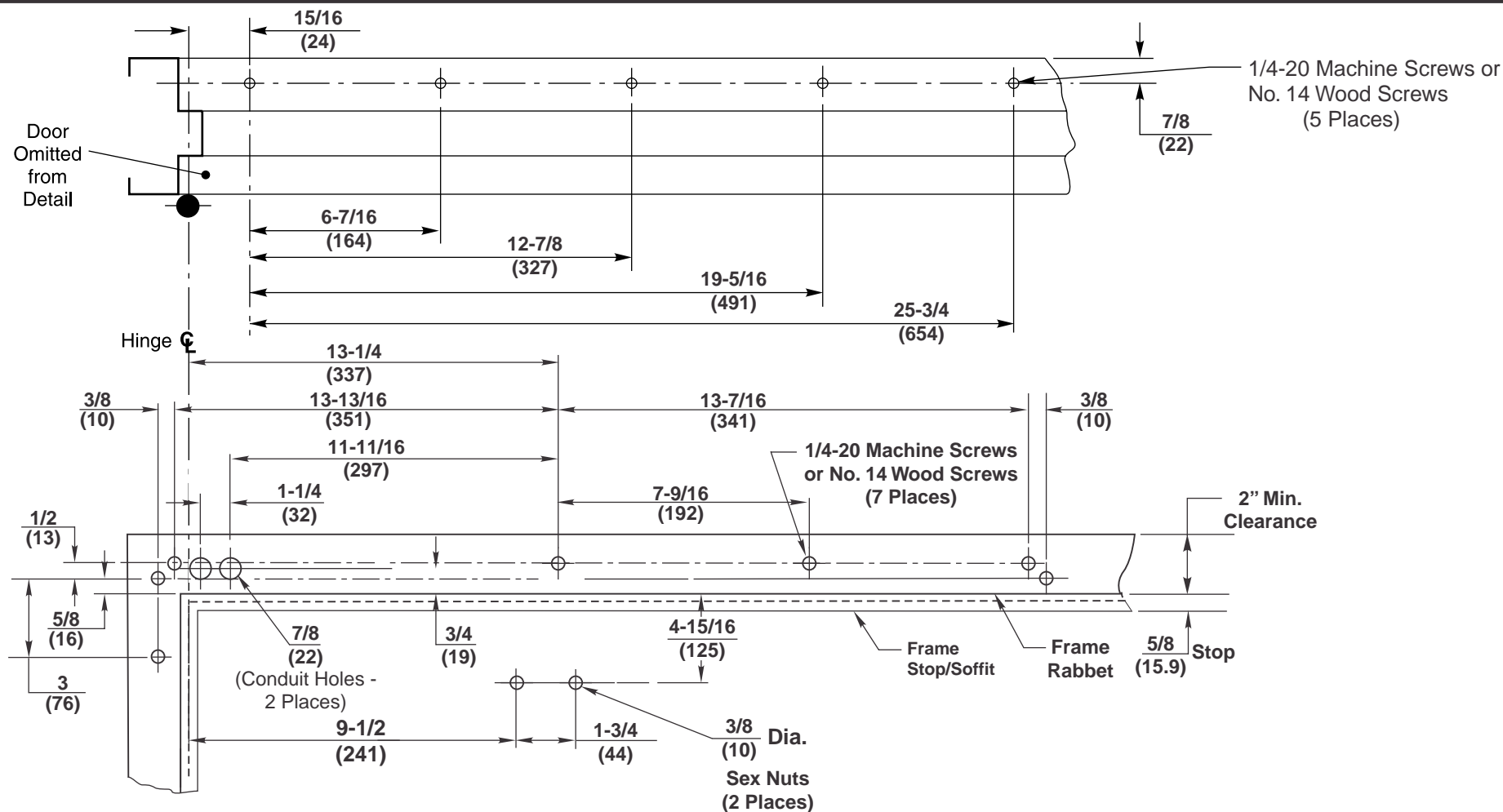
www.nortondoorcontrols.com

TEMPLATE NUMBER

**80-7357-0001-020**

DATE

**02-16**



#### Notes:

- Do not scale drawing.
- Left hand door shown for push side.
- All dimensions are given in inches and millimeters.
- Recommended thickness for reinforcements in hollow-metal doors and frames should provide a combined material thickness of .164 (4.2) MIN.
- This template information based upon use of 5 (127) maximum width butt hinges or 3/4 (19) offset pivots.

**For door opening up to 180°**

Page 2 of 2

## 5700 Series Lower Energy Operator

### Drop Application for Stop (Push) Side of Door Installation 5700DAB-180

Approved 2019-11-05

1-877-974-2255

**Norton**

**ASSA ABLOY**

www.nortondoorcontrols.com

TEMPLATE NUMBER

**80-7357-0001-020**

DATE

**02-16**